

## Product datasheet for **AP07440PU-N**

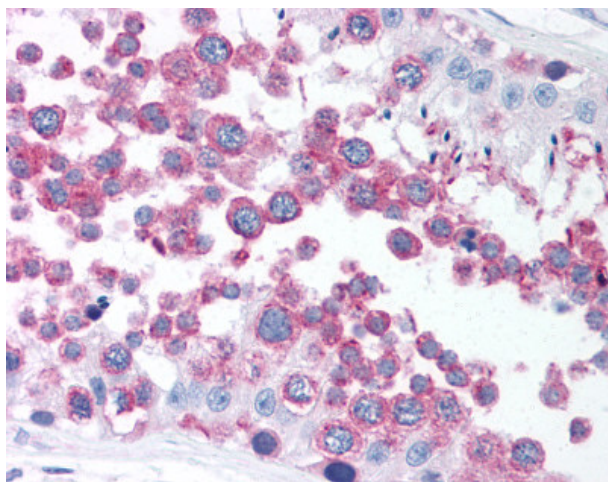
### gamma Tubulin (TUBG1) (C-term) Rabbit Polyclonal Antibody

#### Product data:

Product Type:	Primary Antibodies
Applications:	IF, IHC, WB
Recommended Dilution:	<b>Immunofluorescence.</b> <b>Immunohistochemistry on Paraffin Sections:</b> 1/50. <b>Western Blot.</b>
Reactivity:	Human, Mouse
Host:	Rabbit
Isotype:	IgG
Clonality:	Polyclonal
Immunogen:	Synthetic peptide from human TUBG1 / Gamma Tubulin (C-term)
Specificity:	This antibody reacts to the tubulin gamma chain (TUBG1) at C-term.
Formulation:	Phosphate-buffered solution, pH 7.2, containing 0.09% sodium azide and 50% glycerol State: Aff - Purified State: Liquid purified Ig
Concentration:	lot specific
Purification:	Immunoaffinity Chromatography
Conjugation:	Unconjugated
Storage:	Store undiluted at 2-8°C for one month or (in aliquots) at -20°C for longer. Avoid repeated freezing and thawing.
Stability:	Shelf life: one year from despatch.
Gene Name:	tubulin gamma 1
Database Link:	<a href="#">Entrez Gene 7283 Human P23258</a>
Background:	Tubulin is the major constituent of microtubules. The gamma chain is found at microtubule organizing centers (MTOC) such as the spindle poles or the centrosome. Pericentriolar matrix component that regulates alpha/beta chain minus-end nucleation, centrosome duplication and spindle formation.
Synonyms:	Tubulin gamma-1 chain, Gamma-1-tubulin, GCP-1



[View online »](#)

**Product images:**

Testis: Formalin-Fixed Paraffin-Embedded (FFPE)