

Product datasheet for **AP07403PU-N**

RIF1 (2406-2419) Rabbit Polyclonal Antibody

Product data:

Product Type:	Primary Antibodies
Applications:	ELISA, IHC, WB
Recommended Dilution:	ELISA: 1/5000 - 1/40000. Immunohistochemistry on Paraffin Sections: 5 µg/ml. Western Blot: 1/500 - 1/3000.
Reactivity:	Human, Mouse, Canine, Monkey, Rat
Host:	Rabbit
Clonality:	Polyclonal
Immunogen:	Synthetic peptide corresponding to amino acids 2406-2419 of Mouse Rif1
Specificity:	This antibody recognizes amino acids 2406-2419 of Rif1.
Formulation:	0.02M Potassium Phosphate, 0.15M Sodium Chloride, pH 7.2 State: Aff - Purified State: Liquid purified Ig fraction Preservative: 0.01% Sodium Azide
Concentration:	lot specific
Purification:	Immunoaffinity Chromatography
Conjugation:	Unconjugated
Storage:	Upon receipt store the antibody (in aliquots) at -20°C. Dilute only prior to immediate use. Avoid repeated freezing and thawing.
Stability:	Shelf life: one year from despatch.
Gene Name:	replication timing regulatory factor 1
Database Link:	Entrez Gene 55183 Human Q5UIP0



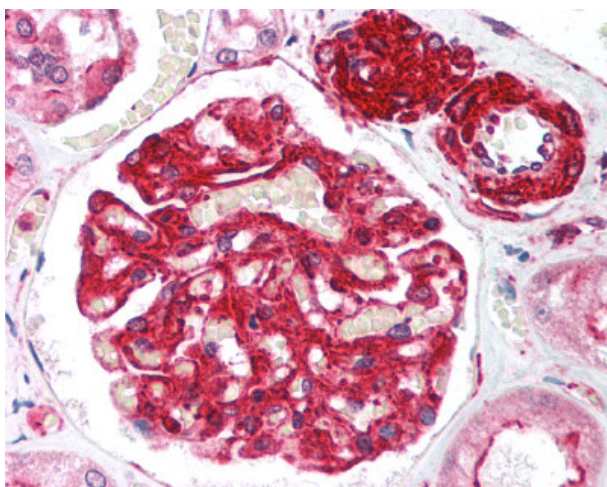
[View online »](#)

Background:

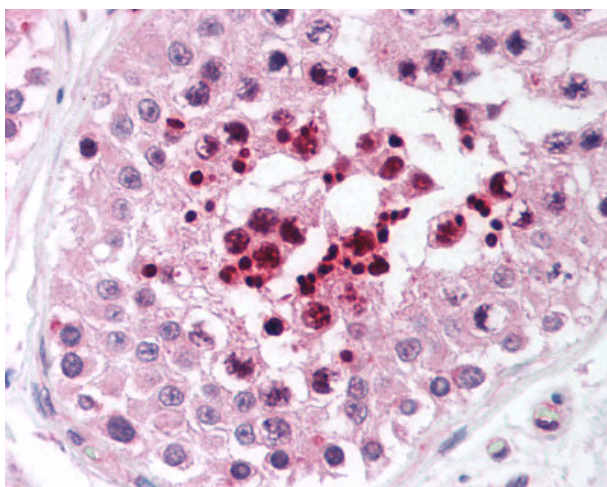
Rif1 (also known as telomere-associated protein RIF1 and Rap1-interacting factor 1) is a mouse ortholog of the yeast Rif1 family of telomere-associated proteins identified on the basis of its high expression in primordial germ cells and embryo-derived pluripotent stem cell lines. Mouse Rif1 is a protein involved in negative regulation of telomere length. It is also localized to ATM dependent DNA damage foci and may act at the chromatin level to allow access to some factors.

Synonyms:

DKFZp434D1026; DKFZp781N1478; FLJ10599; FLJ12870; OTTHUMP00000162712

Product images:

Formalin-Fixed Paraffin-Embedded Human Kidney stained with Rif1 antibody



Formalin-Fixed Paraffin-Embedded Human Testis stained with Rif1 antibody