

Product datasheet for **AP07394PU-N**

Catalase (CAT) Rabbit Polyclonal Antibody

Product data:

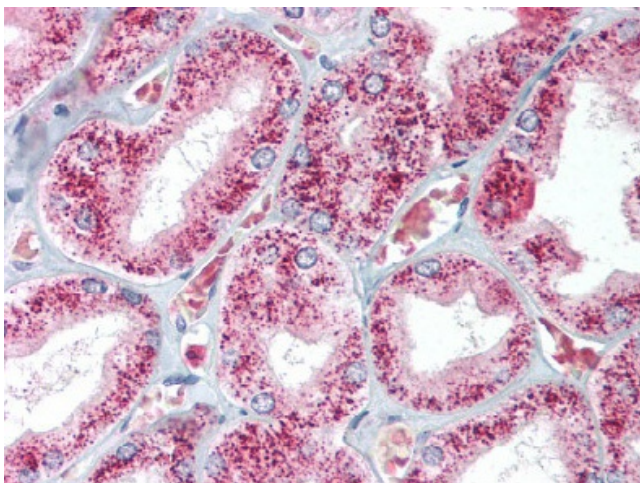
Product Type:	Primary Antibodies
Applications:	ELISA, IF, IHC, IP, WB
Recommended Dilution:	ELISA. Immunofluorescence. Immunohistochemistry on Paraffin Sections: 5 µg/ml. Immunoprecipitation. Western Blot.
Reactivity:	Bovine, Human
Host:	Rabbit
Clonality:	Polyclonal
Immunogen:	Catalase from Bovine liver
Specificity:	This antibody recognizes Catalase [Bovine liver].
Formulation:	0.02M Potassium Phosphate, pH 7.2 containing 0.15M Sodium Chloride and 0.01% (w/v) Sodium Azide as preservative State: Purified State: Liquid purified Ig fraction
Concentration:	lot specific
Conjugation:	Unconjugated
Storage:	Store the antibody undiluted at 2-8°C for one month or (in aliquots) at -20°C for longer. Avoid repeated freezing and thawing.
Stability:	Shelf life: one year from despatch.
Gene Name:	catalase
Database Link:	Entrez Gene 847 Human P04040
Background:	CAT / Catalase is catalase, a key antioxidant enzyme in the bodies defense against oxidative stress. Catalase is a heme enzyme that is present in the peroxisome of nearly all aerobic cells. Catalase converts the reactive oxygen species hydrogen peroxide to water and oxygen and thereby mitigates the toxic effects of hydrogen peroxide.



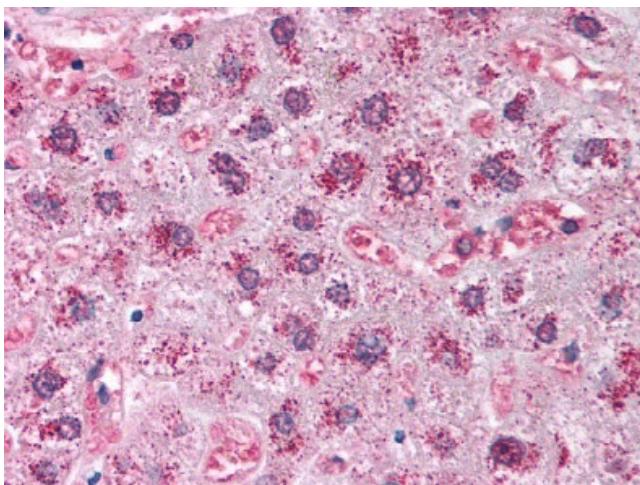
[View online »](#)

Synonyms: CAT, Peroxisome Marker

Product images:



Immunohistochemistry Image: Kidney Formalin-Fixed Paraffin-Embedded (FFPE) anti Catalase antibody



Immunohistochemistry Image: Liver Formalin-Fixed Paraffin-Embedded (FFPE) anti Catalase antibody