

## Product datasheet for **AP07392PU-N**

### Renin (REN) (full length) Sheep Polyclonal Antibody

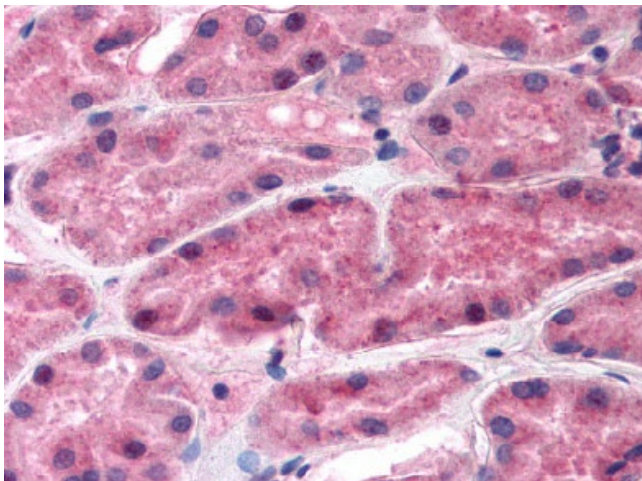
#### Product data:

Product Type:	Primary Antibodies
Applications:	ELISA, IHC, WB
Recommended Dilution:	<b>ELISA.</b> <b>Immunohistochemistry on Paraffin Sections:</b> 2.5 µg/ml. <b>Western Blot.</b>
Reactivity:	Human
Host:	Sheep
Clonality:	Polyclonal
Immunogen:	Recombinant full length wild-type human renin (Glycosylated)
Specificity:	This antibody reacts to full length Renin (REN).
Formulation:	0.05M Sodium Phosphate, 0.1M NaCl 1mM EDTA, pH 6.6 State: Purified State: Liquid purified Ig fraction
Concentration:	lot specific
Purification:	Protein G Chromatography
Conjugation:	Unconjugated
Storage:	Upon receipt, store the antibody at -20°C to -70°C. Avoid repeated freezing and thawing.
Stability:	Shelf life: one year from despatch.
Gene Name:	renin
Database Link:	<a href="#">Entrez Gene 5972 Human P00797</a>
Background:	Renin is a highly specific endopeptidase, whose only known function is to generate angiotensin I from angiotensinogen in the plasma, initiating a cascade of reactions that produce an elevation of blood pressure and increased sodium retention by the kidney. Renin also occurs in other organs than the kidney, e.g., in the brain, where it is implicated in the regulation of numerous activities.
Synonyms:	REN, Angiotensinogenase, angiotensin-forming enzyme, HNFJ2



[View online »](#)

**Product images:**



Kidney: Formalin-Fixed Paraffin-Embedded (FFPE)