

Product datasheet for **AP07389PU-N**

XBP1 Rabbit Polyclonal Antibody

Product data:

Product Type:	Primary Antibodies
Applications:	IF, IHC, WB
Recommended Dilution:	Immunocytochemistry. Immunohistochemistry on Paraffin Sections: 5 µg/ml. Western Blot: 1 - 2 µg/ml.
Reactivity:	Human, Mouse, Rat
Host:	Rabbit
Clonality:	Polyclonal
Immunogen:	Synthetic peptide corresponding to a 17 amino acid peptide from near the Carboxy terminus of XBP-1.
Specificity:	This antibody reacts to a 17 amino acid peptide from near the carboxy terminus of XBP-1.
Formulation:	Phosphate buffered saline, containing 0.02% Sodium Azide as preservative. State: Aff - Purified State: Liquid purified Ig fraction.
Concentration:	lot specific
Purification:	Immunoaffinity Chromatography.
Conjugation:	Unconjugated
Storage:	Store the antibody undiluted at 2-8°C for one month or in (aliquots) at -20°C for longer. Avoid repeated freezing and thawing.
Stability:	Shelf life: one year from despatch.
Gene Name:	X-box binding protein 1
Database Link:	Entrez Gene 7494 Human P17861



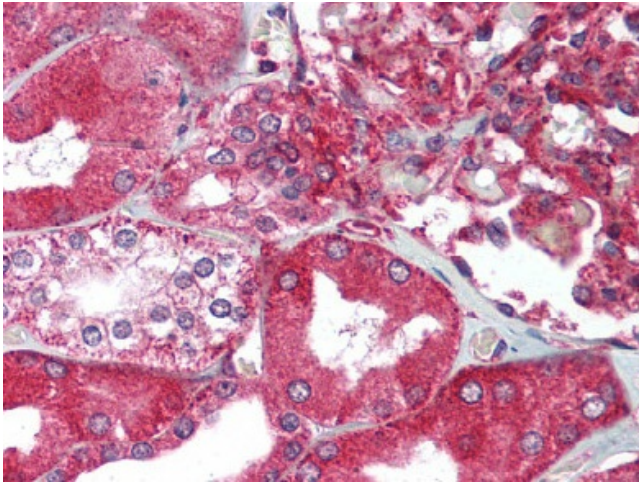
[View online »](#)

Background:

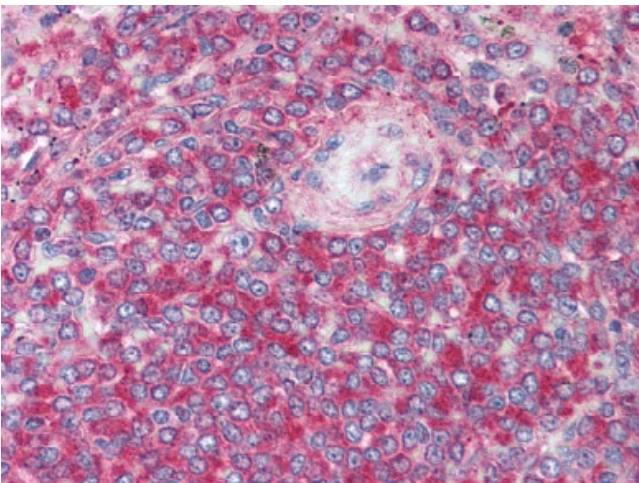
This gene encodes a transcription factor that regulates MHC class II genes by binding to a promoter element referred to as an X box. The protein contains two domains commonly found in transcription factors that confer DNA binding and dimerization capability. This gene product was also separately identified as a cellular transcription factor that binds to an enhancer in the promoter of the T cell leukemia virus type 1 promoter. It may increase expression of viral proteins by acting as the DNA binding partner of a viral transactivator. There is also a recent finding that the same agents that cause an ER stress response, the unfolded protein response, also increase transcription of this gene. This increase in transcription requires an ER stress response consensus binding element in the promoter.

Synonyms:

XBP-1, XBP2

Product images:

Kidney: Formalin-Fixed Paraffin-Embedded (FFPE)



Spleen: Formalin-Fixed Paraffin-Embedded (FFPE)