

Product datasheet for **AP07375PU-N**

TNFRSF14 Rabbit Polyclonal Antibody

Product data:

Product Type:	Primary Antibodies
Applications:	IF, IHC, WB
Recommended Dilution:	Immunocytochemistry. Immunohistochemistry on Paraffin Sections: 5 µg/ml. Western Blot: 2 µg/ml.
Reactivity:	Human
Host:	Rabbit
Clonality:	Polyclonal
Immunogen:	Synthetic peptide
Specificity:	This antibody reacts to a 16 amino acid peptide from near the carboxy terminus of TNFRSF14.
Formulation:	Phosphate buffered saline, containing 0.02% sodium azide State: Aff - Purified State: Liquid purified Ig
Concentration:	lot specific
Purification:	Immunoaffinity Chromatography
Conjugation:	Unconjugated
Storage:	Store the antibody undiluted at 2-8°C. DO NOT FREEZE!
Stability:	Shelf life: one year from despatch.
Gene Name:	tumor necrosis factor receptor superfamily member 14
Database Link:	Entrez Gene 8764 Human Q92956



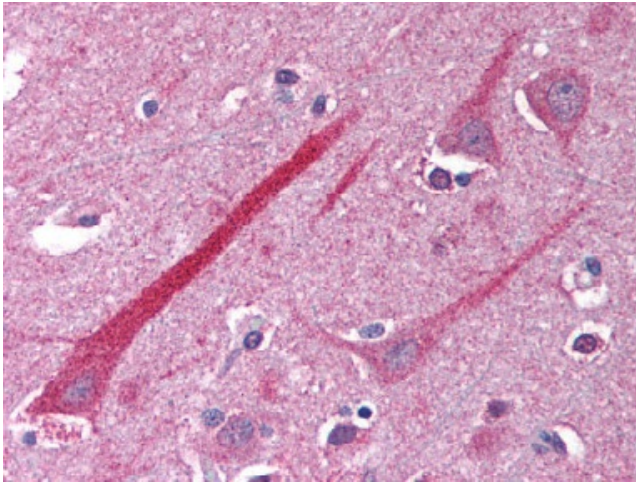
[View online »](#)

Background:

HVEM (Herpes virus entry mediator) is a member of the tumor necrosis factor receptor family. This family of receptors plays a central role in the development of the immune system. HVEM has been shown to mediate HSV entry into activated T cells, in addition to modulating the activation of nuclear factor NF- κ B (a transcriptional activator of multiple immuno modulatory and inflammatory genes) and transcription factor AP-1 (a regulator of cellular stress-response genes). Binding by HVEM of the ligand LIGHT induces receptor down regulation. Degradation or release of LIGHT by matrix metalloproteinases then contributes to the return to baseline levels for both LIGHT and HVEM.

Synonyms:

HVEA, Herpesvirus entry mediator A, TR2

Product images:

Brain, cortex: Formalin-Fixed Paraffin-Embedded (FFPE)