

Product datasheet for **AP07366PU-N**

TLR10 Rabbit Polyclonal Antibody

Product data:

Product Type:	Primary Antibodies
Applications:	IHC, WB
Recommended Dilution:	Immunohistochemistry on Paraffin Sections: 5 µg/ml. Western Blot: 0.5 - 1 µg/ml.
Reactivity:	Human
Host:	Rabbit
Clonality:	Polyclonal
Immunogen:	Synthetic peptide -KLH conjugated corresponding to 14 amino acids near the middle of TLR10.
Specificity:	This antibody recognizes CD290/TLR10.
Formulation:	Phosphate buffered saline containing 0.02% Sodium Azide as preservative. State: Purified State: Liquid purified Ig fraction.
Concentration:	lot specific
Purification:	Ion Exchange Chromatography.
Conjugation:	Unconjugated
Storage:	Store the antibody undiluted at 2-8°C.
Stability:	Shelf life: one year from despatch.
Gene Name:	toll like receptor 10
Database Link:	Entrez Gene 81793 Human Q9BXR5
Background:	Toll-like receptors (TLRs) are signaling molecules that recognize different microbial products during infection and serve as an important link between the innate and adaptive immune responses. These proteins act through adaptor molecules such as MyD88 and TIRAP to activate various kinases and transcription factors. TLR10 is highly homologous to TLRs 1 and 6 and is most highly expressed in lymphoid tissues. Most recently genetic variation in TLR10 has been associated with contributing to asthma risk. It should be noted that TLR10 exists in mice only as a pseudogene.



[View online »](#)

Synonyms: Toll-like receptor 10, UNQ315/PRO358

Product images:

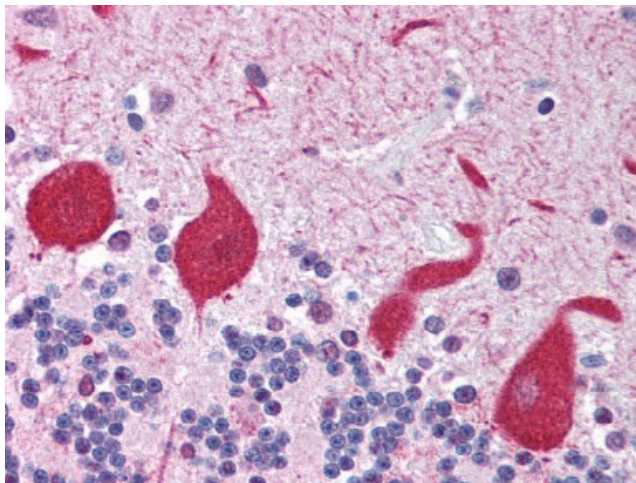


Figure 1. TLR10 antibody staining of Formalin-Fixed Paraffin-Embedded Brain Cerebellum.