

Product datasheet for **AP07353PU-N**

SLUG (SNAI2) Rabbit Polyclonal Antibody

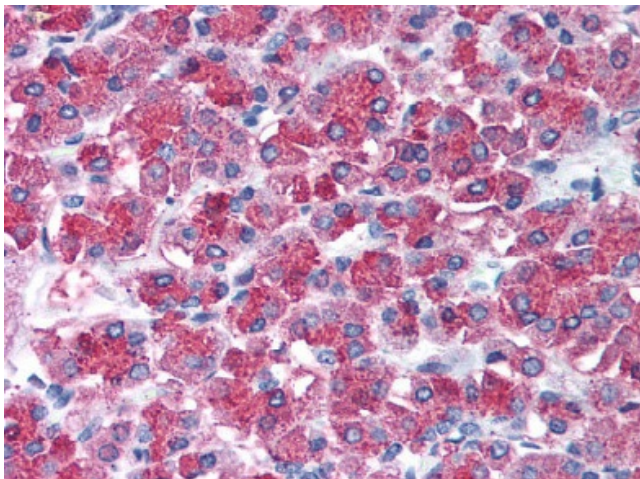
Product data:

Product Type:	Primary Antibodies
Applications:	IHC, WB
Recommended Dilution:	Immunohistochemistry on Paraffin Sections: 10 µg/ml. Western Blot: 1 - 2 µg/ml.
Reactivity:	Human, Mouse
Host:	Rabbit
Clonality:	Polyclonal
Immunogen:	Synthetic peptide (KLH conjugated) corresponding to 14 amino acid peptide from near the center of Human SNAI2.
Specificity:	This antibody recognizes Snail Homolog 2 (SNAI2).
Formulation:	PBS containing 0.02% Sodium Azide as preservative. State: Aff - Purified State: Liquid purified Ig fraction.
Concentration:	lot specific
Purification:	Immunoaffinity Chromatography.
Conjugation:	Unconjugated
Storage:	Store the antibody undiluted at 2-8°C for one month or (in aliquots) at -20°C for longer. Avoid repeated freezing and thawing.
Stability:	Shelf life: one year from despatch.
Gene Name:	snail family transcriptional repressor 2
Database Link:	Entrez Gene 6591 Human O43623
Background:	This gene encodes a member of the Snail family of C2H2-type zinc finger transcription factors. The encoded protein acts as a transcriptional repressor that binds to E-box motifs and is also likely to repress E-cadherin transcription in breast carcinoma. This protein is involved in epithelial-mesenchymal transitions and has antiapoptotic activity. Mutations in this gene may be associated with sporadic cases of neural tube defects.
Synonyms:	SLUGH



[View online »](#)

Product images:



Pancreas: Formalin-Fixed Paraffin-Embedded (FFPE)