

Product datasheet for **AP07326PU-N**

MDM2 Rabbit Polyclonal Antibody

Product data:

Product Type:	Primary Antibodies
Applications:	IF, IHC, WB
Recommended Dilution:	Immunocytochemistry. Immunohistochemistry on Paraffin Sections: 10 µg/ml. Western Blot: 0.5 - 1 µg/ml.
Reactivity:	Human
Host:	Rabbit
Clonality:	Polyclonal
Immunogen:	Synthetic peptide
Specificity:	This antibody reacts to a synthetic peptide (gavcfeedsnsresls) corresponding to amino acids 122 to 139 of MTBP, which differ from the mouse sequence by three amino acids.
Formulation:	Phosphate buffered saline, containing 0.02% sodium azide State: Aff - Purified State: Liquid purified Ig
Concentration:	lot specific
Purification:	Immunoaffinity Chromatography
Conjugation:	Unconjugated
Storage:	Store the antibody undiluted at 2-8°C for one month or (in aliquots) at -20°C for longer. Avoid repeated freezing and thawing.
Stability:	Shelf life: one year from despatch.
Gene Name:	MDM2 proto-oncogene
Database Link:	Entrez Gene 4193 Human Q00987



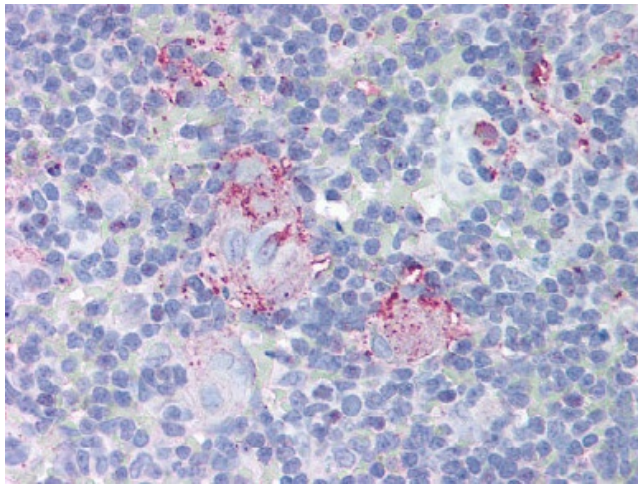
[View online »](#)

Background:

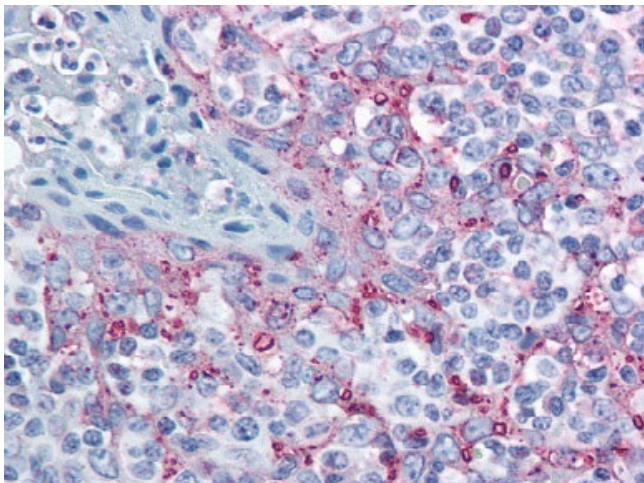
The p53 tumor-suppressor gene integrates numerous signals that control cell life and death. Several molecules involved in p53 network, including Chk2, p53R2, p53AIP1, Noxa, PIDD, PID/MTA2, and MTBP, were recently discovered. The transcriptional activity of p53 is modulated by posttranslational regulations of the p53 protein including stabilization and acetylation. P53 transcriptionally activates MDM2 gene then the translated MDM2 protein binds to p53 and promotes the degradation of p53 leading to lowering the concentration of p53 protein. MDM2 inhibits both p53 mediated G1 arrest and apoptosis. A recently discovered protein termed MTBP was found to bind to MDM2 and to inhibit the modulation effect of MDM2 on p53. MTBP is expressed in a variety of normal tissues.

Synonyms:

p53-binding protein Mdm2, Oncoprotein Mdm2, Double minute 2 protein, Hdm2

Product images:

Thymus: Formalin-Fixed Paraffin-Embedded (FFPE)



Tonsil: Formalin-Fixed Paraffin-Embedded (FFPE)