

Product datasheet for **AP07289PU-N**

CTRP6 (C1QTNF6) Rabbit Polyclonal Antibody

Product data:

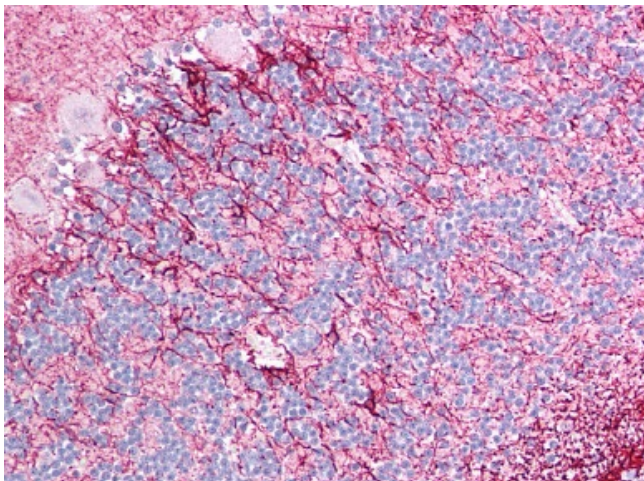
Product Type:	Primary Antibodies
Applications:	IF, IHC, WB
Recommended Dilution:	Immunocytochemistry. Immunohistochemistry on Paraffin Sections: 5 µg/ml. Western Blot: 1 µg/ml.
Reactivity:	Human, Mouse
Host:	Rabbit
Clonality:	Polyclonal
Immunogen:	Synthetic peptide - KLH conjugated corresponding to 15 amino acid peptide from near the carboxy-terminus of Human CTRP6
Specificity:	This antibody recognizes a 15 amino acid peptide from near the carboxy-terminus of CTRP6.
Formulation:	PBS containing 0.02% Sodium Azide as preservative State: Aff - Purified State: Liquid purified Ig fraction
Concentration:	lot specific
Purification:	Immunoaffinity Chromatography
Conjugation:	Unconjugated
Storage:	Store the antibody undiluted at 2-8°C. Avoid freeze/thaw cycles.
Stability:	Shelf life: one year from despatch.
Gene Name:	C1q and tumor necrosis factor related protein 6
Database Link:	Entrez Gene 114904 Human Q9BXI9
Background:	CTRP6 is an adipokine. It contains at least 4 glycosylation motifs, suggesting that it may be highly post-translationally modified. Unlike adiponectin, which is expressed exclusively by differentiated adipocytes, the CTRPs are expressed in a wide variety of tissues. These proteins are thought to act mainly on liver and muscle tissue to control glucose and lipid metabolism.



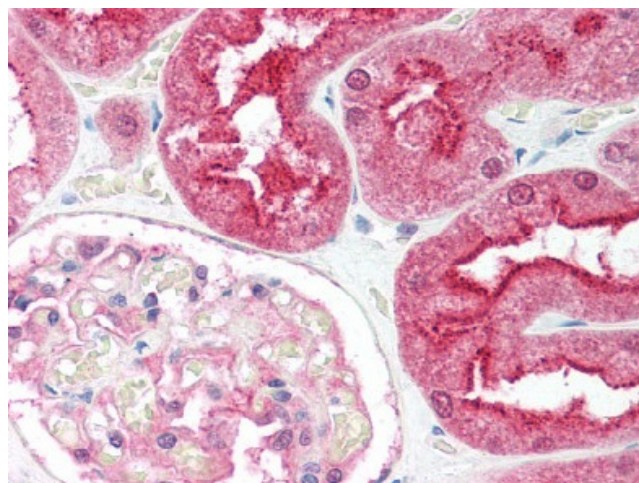
[View online »](#)

Synonyms: CTRP6

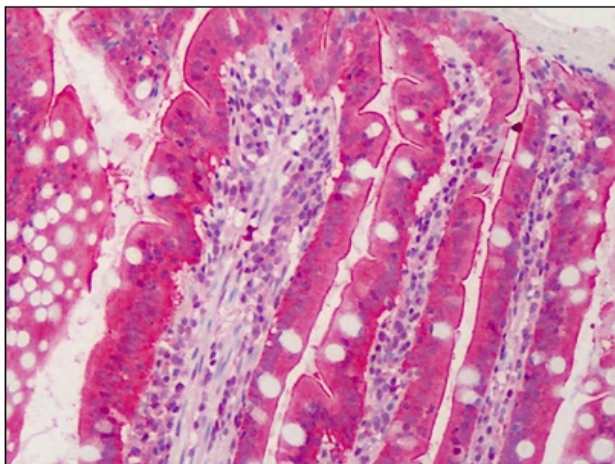
Product images:



Human Small Intestine: Formalin-Fixed, Paraffin-Embedded.



Human Brain, cerebellum: Formalin-Fixed Paraffin-Embedded.



C1QTNF6 antibody staining of Human Kidney Formalin-Fixed Paraffin-Embedded at 5 ug/ml followed by biotinylated Goat anti-Rabbit IgG secondary antibody, alkaline phosphatase-streptavidin and chromogen.