

## Product datasheet for **AP07273PU-N**

### PHAP1 (ANP32A) (C-term) Rabbit Polyclonal Antibody

#### Product data:

Product Type:	Primary Antibodies
Applications:	IF, IHC, WB
Recommended Dilution:	<b>Immunofluorescence:</b> 20 µg/ml. <b>Immunohistochemistry on Paraffin Sections:</b> 10 µg/ml. <b>Western Blot:</b> 0.5 - 2 µg/ml.
Reactivity:	Human, Mouse, Rat
Host:	Rabbit
Clonality:	Polyclonal
Immunogen:	Synthetic peptide corresponding to amino acids at carboxy terminus of human PHAP I
Specificity:	This antibody reacts to a synthetic peptide corresponding to amino acids at carboxy terminus of PHAP I.
Formulation:	Phosphate buffered saline, containing 0.02% sodium azide State: Aff - Purified State: Liquid purified Ig
Concentration:	lot specific
Purification:	Immunoaffinity Chromatography
Conjugation:	Unconjugated
Storage:	Store the antibody undiluted at 2-8°C for one month or (in aliquots) at -20°C for longer. Avoid repeated freezing and thawing.
Stability:	Shelf life: one year from despatch.
Gene Name:	acidic nuclear phosphoprotein 32 family member A
Database Link:	<a href="#">Entrez Gene 8125 Human P39687</a>



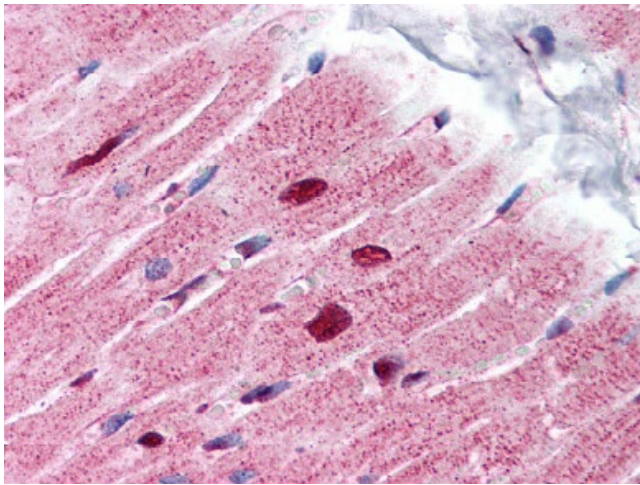
[View online »](#)

**Background:**

Apoptosis is related to many diseases and development. Caspase-9 plays a central role in cell death induced by a variety of apoptosis activators. Cytochrome c, after released from mitochondria, binds to Apaf-1, which forms an apoptosome that in turn binds to and activate procaspase-9. Activated caspase-9 cleaves and activates the effector caspases (caspase-3, -6 and -7), which are responsible for the proteolytic cleavage of many key proteins in apoptosis. The tumor suppressor putative HLA-DR-associated proteins (PHAPs) were recently identified as important regulators of mitochondrion apoptosis. PHAP appears to facilitate apoptosome-mediated caspase-9 activation and to stimulate the mitochondrial apoptotic pathway. PHAP was also shown to oppose both Ras- and Myc-mediated cell transformation.

**Synonyms:**

C15orf1, LANP, MAPM, PHAP1, Mapmodulin

**Product images:**

Heart: Formalin-Fixed Paraffin-Embedded (FFPE)