

## Product datasheet for **AP07256PU-N**

### SARM (SARM1) (C-term) Rabbit Polyclonal Antibody

#### Product data:

Product Type:	Primary Antibodies
Applications:	IF, IHC, WB
Recommended Dilution:	<b>Immunocytochemistry:</b> 2 µg/ml. <b>Immunofluorescence:</b> 2 µg/ml. <b>Immunohistochemistry on Paraffin Sections:</b> 10 µg/ml. <b>Western Blot:</b> 0.5 - 2 µg/ml.
Reactivity:	Human, Mouse
Host:	Rabbit
Clonality:	Polyclonal
Immunogen:	Synthetic peptide corresponding to amino acids near the C-terminus of Human SARM
Specificity:	This antibody is specific to a peptide corresponding to amino acids near the C-terminus of SARM.
Formulation:	PBS containing 0.02% Sodium Azide as preservative State: Purified State: Liquid purified Ig fraction
Concentration:	lot specific
Purification:	Ion Exchange Chromatography
Conjugation:	Unconjugated
Storage:	Store the antibody undiluted at 2-8°C for one month or (in aliquots) at -20°C to -70°C for longer. Avoid repeated freezing and thawing.
Stability:	Shelf life: one year from despatch.
Gene Name:	sterile alpha and TIR motif containing 1
Database Link:	<a href="#">Entrez Gene 23098 Human Q6SZW1</a>



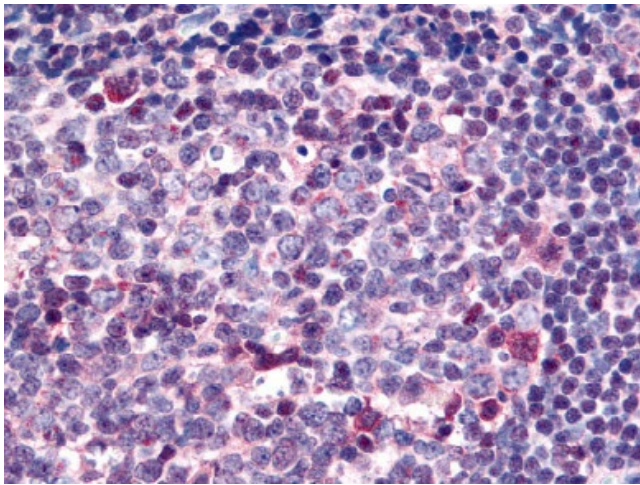
[View online »](#)

**Background:**

Toll-like receptors (TLRs) play an essential role in the detection and elimination of invading microbes. They are type-1 transmembrane receptors, containing extracellular leucine rich repeats and an intracellular Toll/interleukin-1 receptor (TIR) domain. Upon stimulation, these receptors interact with specific TIR domain-containing adaptor proteins. Five such adaptors have been discovered to date, MyD88, Mal (MyD88 adaptor-like)/TIRAP (TIR domain-containing adaptor protein), Trif (TIR-domain-containing adaptor inducing interferon-beta), TRAM (Trif-related adaptor molecule) and SARM (SAM and ARM-containing protein). Different TLRs use different combinations of these adaptors, leading to the activation of common and unique pathways involved in the elimination of the invading microbe.

**Synonyms:**

SARM, SAMD2, KIAA0524

**Product images:**

SARM1 antibody staining of Formalin-Fixed Paraffin-Embedded Human Tonsil at 2 ug/ml followed by biotinylated Goat anti-Rabbit IgG secondary antibody, alkaline phosphatase-streptavidin and chromogen.