

Product datasheet for **AP07250PU-N**

NEK2 Rabbit Polyclonal Antibody

Product data:

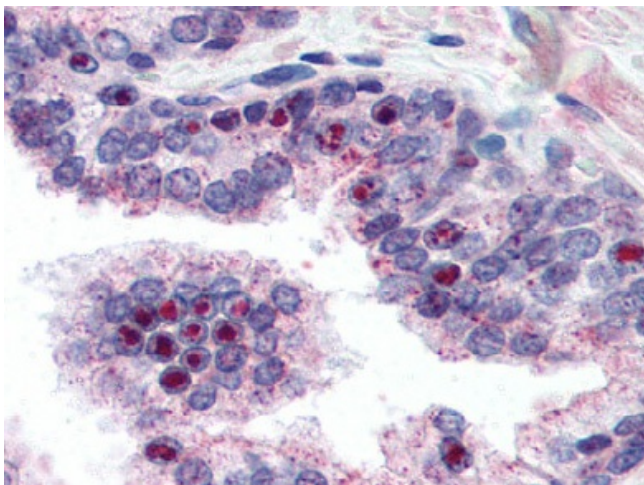
Product Type:	Primary Antibodies
Applications:	ELISA, IF, IHC, WB
Recommended Dilution:	ELISA: 1/2000 - 1/10000. Immunofluorescence. Immunohistochemistry on Paraffin Sections: 2.5 µg/ml. Western Blot: 1/500 - 1/2000.
Reactivity:	Human
Host:	Rabbit
Clonality:	Polyclonal
Immunogen:	Synthetic peptide
Specificity:	This antibody reacts to aa 287-299 of NEK2 protein.
Formulation:	0.02 M Potassium Phosphate, 0.15 M Sodium Chloride, pH 7.2 with 0.01% (w/v) Sodium Azide State: Aff - Purified State: Liquid purified Ig
Concentration:	lot specific
Purification:	Immunoaffinity Chromatography
Conjugation:	Unconjugated
Storage:	Store the antibody at -20°C. Avoid repeated freezing and thawing.
Stability:	Shelf life: one year from despatch.
Gene Name:	NIMA related kinase 2
Database Link:	Entrez Gene 4751 Human P51955
Background:	NEK2, also called serine/threonine-protein kinase Nek2NimA-related protein kinase 2, NimA-like protein kinase 1 and HSPK 21, is a protein kinase involved in mitotic regulation that may have a role at the G2-M transition and may also play a role in meiosis. NEK2 has a nuclear localization and accumulates throughout S phase and shows maximal levels in late G2. This expression pattern is highly reminiscent of that of A and B cyclins.



[View online »](#)

Synonyms: NLK1, NimA-related protein kinase 2, HSPK 21

Product images:



Prostate: Formalin-Fixed Paraffin-Embedded (FFPE)