

## Product datasheet for **AP07237PU-N**

### **PACRG (204-215) Rabbit Polyclonal Antibody**

#### **Product data:**

Product Type:	Primary Antibodies
Applications:	ELISA, IHC, WB
Recommended Dilution:	<b>ELISA:</b> 1/2000 - 1/10000. <b>Immunohistochemistry on Paraffin Sections:</b> 2.5 µg/ml. <b>Western Blot:</b> 1/500 - 1/3000.
Reactivity:	Human, Rat, Zebrafish, Chicken, Mouse
Host:	Rabbit
Clonality:	Polyclonal
Immunogen:	Synthetic peptide from aa 204-215 of human PACRG
Specificity:	This antibody reacts to amino acids 204-215 of PACRG protein.
Formulation:	0.02 M Potassium Phosphate, 0.15 M Sodium Chloride, pH 7.2 with 0.01% (w/v) Sodium Azide State: Aff - Purified State: Liquid purified Ig
Concentration:	lot specific
Purification:	Immunoaffinity Chromatography
Conjugation:	Unconjugated
Storage:	Store undiluted at 2-8°C for one month or (in aliquots) at -20°C for longer. Avoid repeated freezing and thawing.
Stability:	Shelf life: one year from despatch.
Gene Name:	PARK2 coregulated
Database Link:	<a href="#">Entrez Gene 135138 Human Q96M98</a>



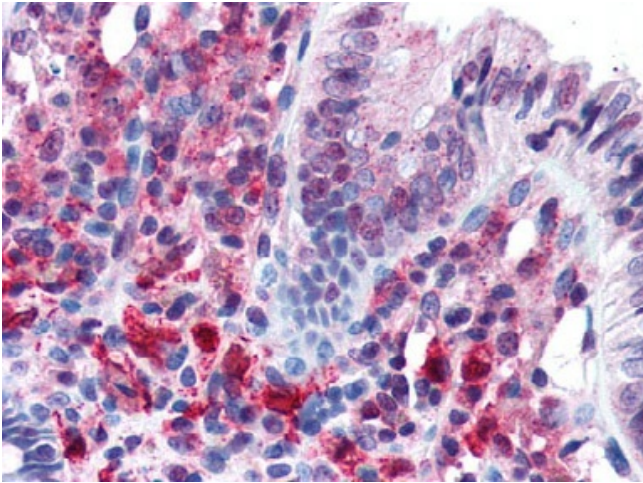
[View online »](#)

**Background:**

PACRG (also known as Parkin coregulated gene protein and PARK2 coregulated) is a gene located very close to parkin, in reverse orientation on the chromosome. It is thought to be co-transcribed with parkin by a bi-directional promoter between the two genes. PACRG is expressed in all immune tissues, spleen, lymph nodes, thymus, tonsils, leukocyte and bone marrow and is also expressed in heart, brain, skeletal muscle, kidney, lung and pancreas. PACRG is expressed in primary Schwann cells and very weakly by monocyte-derived macrophages, which are the primary host cells of *Mycobacterium leprae*, the causative agent of leprosy. Splice variants have been described for this protein.

**Synonyms:**

Parkin coregulated gene protein, GLUP, PARK2 coregulated gene protein, PARK2CRG

**Product images:**

Colon: Formalin-Fixed Paraffin-Embedded (FFPE)