

## Product datasheet for **AP07161PU-N**

### IL24 (100-150) Rabbit Polyclonal Antibody

#### Product data:

Product Type:	Primary Antibodies
Applications:	FC, IHC, WB
Recommended Dilution:	<b>Flow Cytometry.</b> <b>Immunohistochemistry on Paraffin Sections:</b> 10 µg/ml. <b>Western Blot:</b> 0.5 - 3 µg/ml.
Reactivity:	Human, Monkey
Host:	Rabbit
Isotype:	IgG
Clonality:	Polyclonal
Immunogen:	Amino acids 123-136 of human IL-24
Specificity:	This antibody recognizes Interleukin 24 (IL24/Mda-7) at amino acids 100-150.
Formulation:	PBS State: Purified State: Liquid purified IgG fraction Stabilizer: 0.2% Gelatin Preservative: 0.05% Sodium Azide
Concentration:	lot specific
Purification:	Protein G Chromatography
Conjugation:	Unconjugated
Storage:	Store undiluted at 2-8°C for one month or (in aliquots) at -20°C to -70°C for longer. Avoid repeated freezing and thawing.
Stability:	Shelf life: one year from despatch.
Gene Name:	interleukin 24
Database Link:	<a href="#">Entrez Gene 11009 Human Q13007</a>



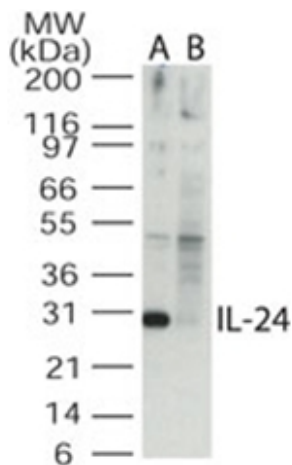
[View online »](#)

**Background:**

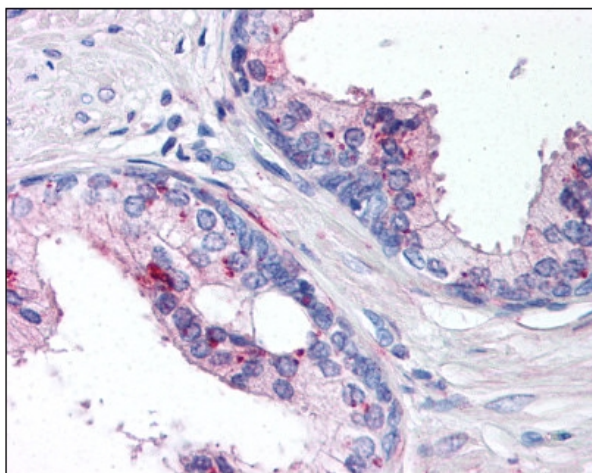
Interleukin 24 (IL-24)/melanoma differentiation-associated gene-7 (mda-7) encodes a secreted protein that exhibits significant homology to the interleukin 10 (IL-10) family of cytokines. The human IL-24 is secreted by activated peripheral blood mononuclear cells and binds two heterodimeric receptors, IL-22R1/IL-20R2 and IL-20R1/IL-20R2 resulting in the activation of JAK/STAT signaling pathways. Mda-7/IL-24, selectively induces growth suppression, apoptosis and radiosensitization in malignant gliomas in a p53-independent manner.

**Synonyms:**

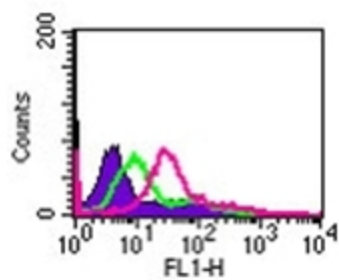
IL-24, MDA7, ST16

**Product images:**


Western blot analysis of IL-24 in the A) absence and B) presence of blocking peptide in Jurkat cell lysate using IL-24 antibody at 0.5 mg/ml.



Prostate, Human: Formalin-Fixed Paraffin-Embedded (FFPE)



Cell surface flow cytometry analysis of IL-24 in Jurkat cells using IL-24 antibody at 5 ug/10<sup>6</sup> cells. The shaded histogram represents cells only, green represents isotype control antibody, and red represents IL-24 antibody.