

Product datasheet for **AP07160PU-N**

RREB1 Rabbit Polyclonal Antibody

Product data:

Product Type:	Primary Antibodies
Applications:	ELISA, IHC, WB
Recommended Dilution:	ELISA: 1/2000 - 1/15000. Immunohistochemistry on Paraffin Sections: 10 µg/ml. Western Blot: 1/500 - 1/2000.
Reactivity:	Human, Mouse
Host:	Rabbit
Clonality:	Polyclonal
Immunogen:	Recombinant mouse RREB1
Specificity:	This antibody recognizes RREB1 protein.
Formulation:	0.02M Potassium Phosphate, 0.15M Sodium Chloride, pH 7.2 with 0.01% (w/v) Sodium Azide as preservative State: Purified State: Liquid purified Ig fraction
Concentration:	lot specific
Purification:	Protein A Chromatography
Conjugation:	Unconjugated
Storage:	Store the antibody undiluted at 2-8°C for one month or (in aliquots) at -20°C for longer. Avoid repeated freezing and thawing.
Stability:	Shelf life: one year from despatch.
Gene Name:	ras responsive element binding protein 1
Database Link:	Entrez Gene 6239 Human Q92766



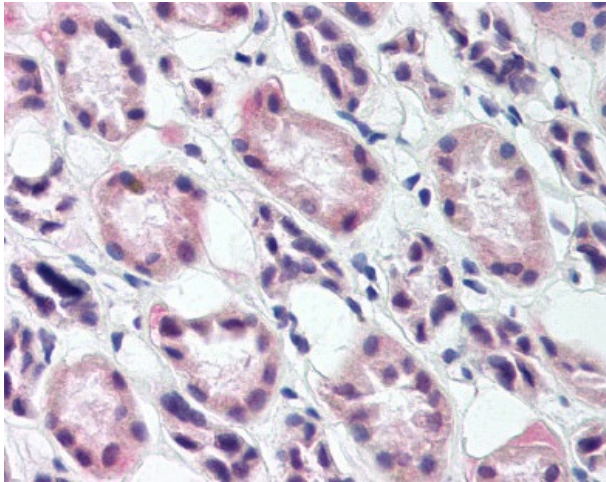
[View online »](#)

Background:

RREB1 (also known as RAS-responsive element binding protein 1 and Raf responsive zinc finger protein) is a transcription factor that binds specifically to the distal RAS-responsive element (RRE) in the calcitonin gene promoter and augments the Ras/Raf-mediated transcriptional response of that promoter. RREB1 may be involved in Ras/Raf-mediated cell differentiation. RREB is a nuclear protein expressed in heart, placenta, lung, liver, skeletal muscle, kidney and pancreas and is not found in the brain. The protein contains 4 C2H2-type zinc fingers.

Synonyms:

RREB-1, FINB, Zep-1

Product images:

RREB1 antibody staining of Formalin-Fixed Paraffin-Embedded Human Kidney.