

## Product datasheet for **AP07146PU-N**

### CRLF2 Rabbit Polyclonal Antibody

#### Product data:

Product Type:	Primary Antibodies
Applications:	ELISA, IHC, WB
Recommended Dilution:	<b>ELISA.</b> <b>Immunohistochemistry on Paraffin Sections:</b> 5 µg/ml. <b>Western Blot:</b> 1 µg/ml.
Reactivity:	Human
Host:	Rabbit
Clonality:	Polyclonal
Immunogen:	Synthetic peptide - KLH conjugated corresponding to a 19 amino acid peptide from near the center of Human CRLF2.
Specificity:	This antibody detects Cytokine Receptor-like Factor 2 (CRLF2) near the center.
Formulation:	PBS containing 0.02% Sodium Azide as preservative State: Purified State: Liquid purified Ig fraction
Concentration:	lot specific
Purification:	Immunoaffinity Chromatography
Conjugation:	Unconjugated
Storage:	Store the antibody undiluted at 2-8°C for one month or (in aliquots) at -20°C for longer. Avoid repeated freezing and thawing.
Stability:	Shelf life: one year from despatch.
Gene Name:	cytokine receptor-like factor 2
Database Link:	<a href="#">Entrez Gene 64109 Human</a> <a href="#">Q9HC73</a>



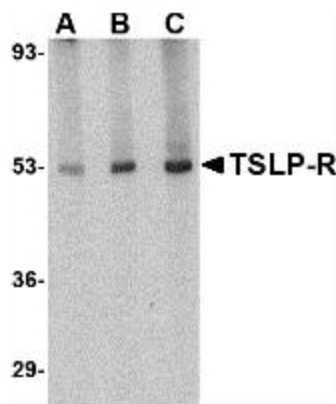
[View online »](#)

**Background:**

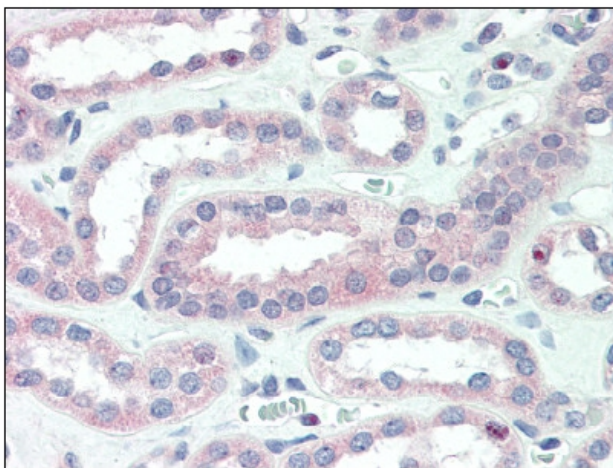
CRLF2 is a type I membrane receptor that forms a functional heterodimeric complex with IL7R to bind TSLP. The TSLP R contains a WSXWS motif required for proper protein folding and a box1 motif important for association with the JAKs. TSLPR has a predicted molecular weight approximately 41 kD, and two further isoforms have been reported that are produced by alternative splicing. The TSLPR is expressed preferentially in myeloid cells including dendritic cells and activated monocytes, and is weakly expressed in T cells. Expression has also been reported in heart, skeletal muscle, and kidney tissues. TSLP binding to the heterodimeric functional receptor (TSLPR and IL7R) activates JAK2, STAT3 and STAT5 to stimulate cell proliferation. Ligand receptor interactions have been implicated in the development of the hematopoietic system, dendritic cell maturation, and the maintenance and polarization of human Th2 memory T cells in allergic diseases.

**Synonyms:**

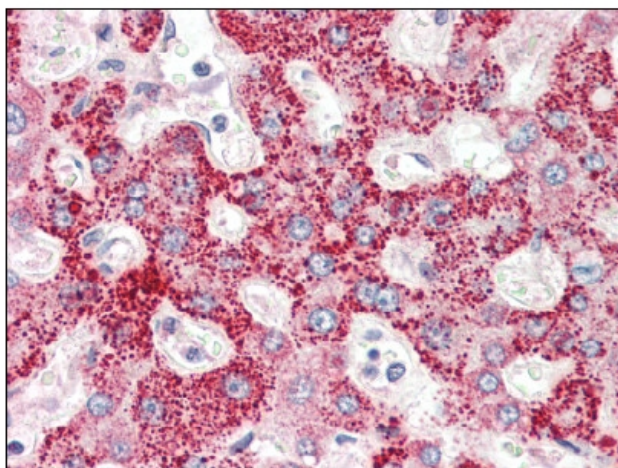
Cytokine receptor-like 2, IL-XR, ILXR, TSLPR

**Product images:**

Western blot analysis of CRLF2 in Human liver tissue lysate with at (A) 0.5 ug/ml (A), 1 ug/ml (B) and 2 ug/ml (C)



CRLF2 antibody staining of Formalin-Fixed, Paraffin-Embedded Human Kidney at 5 ug/ml followed by biotinylated Goat anti-Rabbit IgG secondary antibody, Alkaline Phosphatase-Streptavidin and Chromogen.



CRLF2 antibody staining of Formalin-Fixed, Paraffin-Embedded Human Liver at 5 ug/ml followed by biotinylated Goat anti-Rabbit IgG secondary antibody, Alkaline Phosphatase-Streptavidin and Chromogen.