

## Product datasheet for **AP07120PU-N**

### PTGER3 (3rd Cytopl. Dom.) Rabbit Polyclonal Antibody

#### Product data:

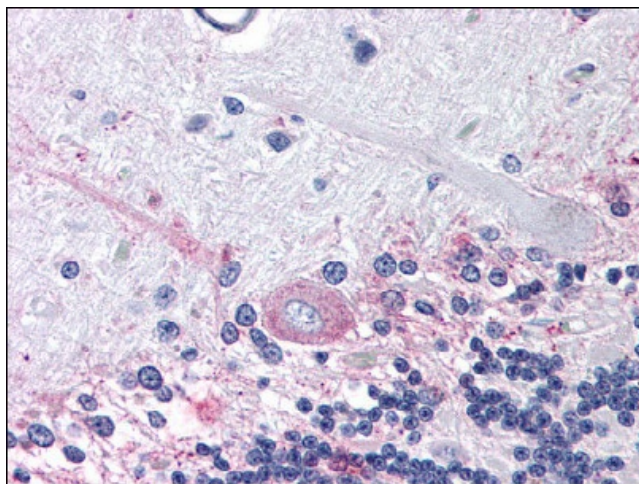
Product Type:	Primary Antibodies
Applications:	ELISA, IHC
Recommended Dilution:	<b>ELISA.</b> <b>Immunohistochemistry on Paraffin Sections:</b> 4 µg/ml.
Reactivity:	Human, Bat, Equine, Monkey, Mouse, Rabbit, Rat
Host:	Rabbit
Clonality:	Polyclonal
Immunogen:	PTGER3 antibody was raised against synthetic peptide from 3rd cytoplasmic domain of human PTGER3 / EP3.
Specificity:	This antibody detects Prostaglandin E Receptor EP3 (PTGER3) at 3rd cytoplasmic domain.
Formulation:	Phosphate buffered saline containing 0.09% Sodium Azide as preservative State: Aff - Purified State: Liquid purified Ig fraction
Concentration:	lot specific
Purification:	Immunoaffinity Chromatography
Conjugation:	Unconjugated
Storage:	Store the antibody undiluted at 2-8°C for one month or (in aliquots) at -20°C to -70°C for longer. Avoid repeated freezing and thawing.
Stability:	Shelf life: one year from despatch.
Gene Name:	prostaglandin E receptor 3
Database Link:	<a href="#">Entrez Gene 5733 Human P43115</a>
Background:	Prostaglandin E Receptor EP3 is a member of the Prostanoid Receptor subfamily. Along with several other receptor subtypes (EP1, EP2, and EP4), it mediates the diverse biological effects of Prostaglandin E2 (PGE2). PGE2 has been implicated in numerous processes, including immune response modulation, male erectile function, induction of labor, cervical cancer, control of blood pressure, and asthma. Various isoforms are produced by alternative splicing.



[View online »](#)

**Synonyms:** Prostaglandin E receptor 3, Prostanoid EP3 receptor, PGE2 receptor EP3 subtype, PGE2-R, PGE receptor EP3 subtype, EP3-III, EP3-II, EP3, Prostaglandin E2 receptor EP3 subtype

**Product images:**



Brain, cerebellum: Formalin-Fixed Paraffin-Embedded (FFPE)