

Product datasheet for **AP07079PU-N**

Melatonin Receptor 1B (MTNR1B) (N-Term, Extracel. Dom.) Rabbit Polyclonal Antibody

Product data:

Product Type:	Primary Antibodies
Applications:	ELISA, IHC
Recommended Dilution:	ELISA. Immunohistochemistry on Paraffin Sections: 10 µg/ml.
Reactivity:	Human
Host:	Rabbit
Clonality:	Polyclonal
Immunogen:	MTNR1B antibody was raised against synthetic 16 amino acid peptide from N-terminal extracellular domain of human MTNR1B.
Specificity:	This antibody detects Melatonin Receptor Type 1B (MT2) (MTNR1B) at N-terminal extracellular domain.
Formulation:	PBS containing 0.09% sodium azide as preservative State: Aff - Purified State: Liquid purified Ig fraction
Concentration:	lot specific
Purification:	Immunoaffinity chromatography
Conjugation:	Unconjugated
Storage:	Store the antibody undiluted at 2-8°C for one month or (in aliquots) at -20°C to -70°C for longer. Avoid repeated freezing and thawing.
Stability:	Shelf life: one year from despatch.
Gene Name:	melatonin receptor 1B
Database Link:	Entrez Gene 4544 Human P49286



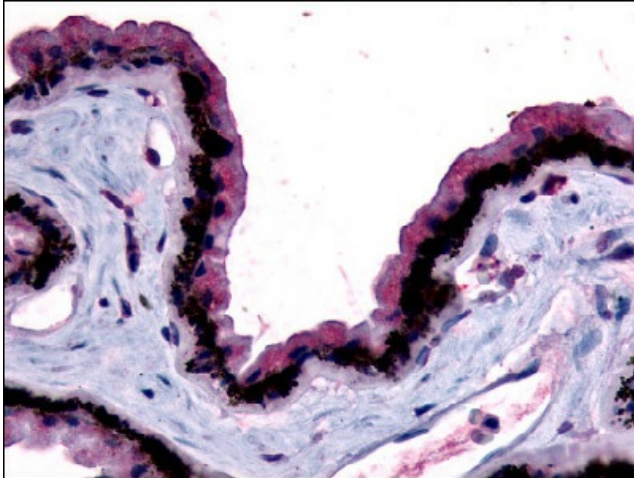
[View online »](#)

Background:

MTNR1B / MT2 is one of two high affinity forms of a receptor for melatonin, the primary hormone secreted by the pineal gland. This gene product is an integral membrane protein that is a G-protein coupled, 7-transmembrane receptor. It is found primarily in the retina and brain although this detection requires RT-PCR. It is thought to participate in light-dependent functions in the retina and may be involved in the neurobiological effects of melatonin.

Synonyms:

MTNR1B

Product images:

Eye, retina: Formalin-Fixed Paraffin-Embedded (FFPE)