

## Product datasheet for **AP07002PU-N**

### DUSP23 (Internal) Rabbit Polyclonal Antibody

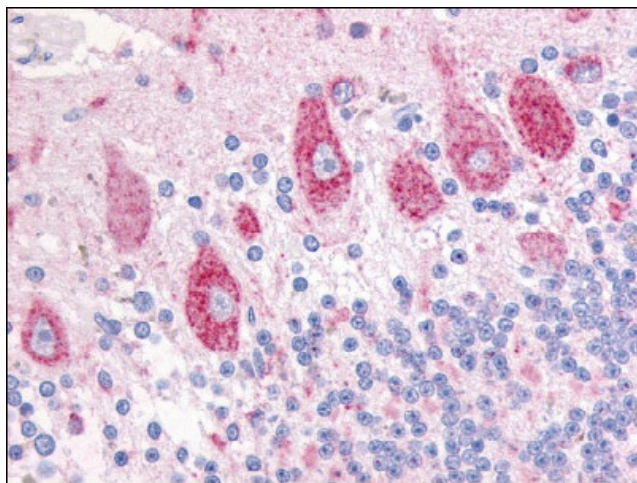
#### Product data:

Product Type:	Primary Antibodies
Applications:	ELISA, IHC
Recommended Dilution:	<b>ELISA.</b> <b>Immunohistochemistry on Paraffin Sections:</b> 10 µg/ml.
Reactivity:	Human, Mouse, Bovine, Bat, Equine, Monkey, Rat
Host:	Rabbit
Clonality:	Polyclonal
Immunogen:	DUSP23 antibody was raised against synthetic 16 amino acid peptide from internal region of human DUSP23.
Specificity:	This antibody detects Dual Specificity Phosphatase 23 (DUSP23) at internal domain.
Formulation:	PBS containing 0.09% sodium azide as preservative State: Aff - Purified State: Liquid purified Ig fraction
Concentration:	lot specific
Purification:	Immunoaffinity Chromatography
Conjugation:	Unconjugated
Storage:	Store the antibody undiluted at 2-8°C for one month or (in aliquots) at -20°C to -70°C for longer. Avoid repeated freezing and thawing.
Stability:	Shelf life: one year from despatch.
Gene Name:	dual specificity phosphatase 23
Database Link:	<a href="#">Entrez Gene 54935 Human Q9BVJ7</a>
Background:	Most of dual-specificity protein phosphatases (DSPs) play an important role in the regulation of mitogenic signal transduction and controlling the cell cycle in response to extracellular stimuli. DUSP23 has been shown to dephosphorylate p44ERK1 but not p38 and p54SAPKbeta in vitro. Reverse transcription-PCR (RT-PCR) revealed that the DUSP23 was expressed in most fetal tissues and two adult tissues: testis and colon.



[View online »](#)

Synonyms: VH1-like phosphatase Z, LDP3, VHZ

**Product images:**

Brain, cerebellum: Formalin-Fixed Paraffin-Embedded (FFPE)