

## Product datasheet for **AP06984PU-N**

### EMR2 (ADGRE2) (N-term, Extracel. Dom.) Rabbit Polyclonal Antibody

#### Product data:

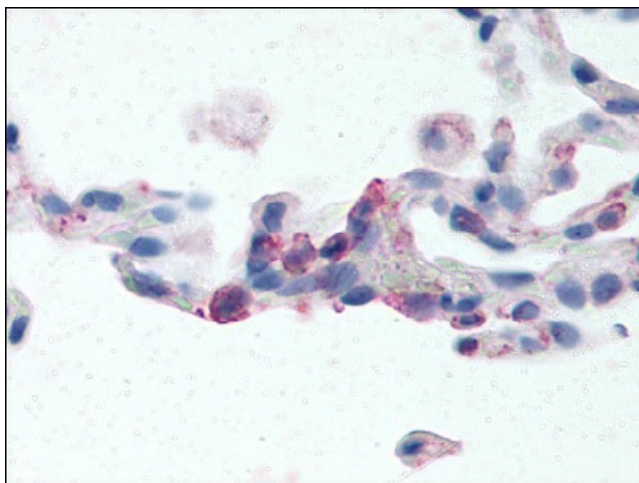
Product Type:	Primary Antibodies
Applications:	ELISA, IHC
Recommended Dilution:	<b>ELISA.</b> <b>Immunohistochemistry on Paraffin Sections:</b> 12 µg/ml.
Reactivity:	Human
Host:	Rabbit
Clonality:	Polyclonal
Immunogen:	EMR2 antibody was raised against synthetic 19 amino acid peptide from N-terminal extracellular domain of human EMR2.
Specificity:	This antibody detects EGF-Like Module-Containing Mucin-Like Receptor 2 (EMR2) at N-terminal extracellular domain.
Formulation:	PBS containing 0.09% Sodium Azide as preservative State: Aff - Purified State: Liquid purified Ig fraction
Concentration:	lot specific
Purification:	Immunoaffinity chromatography
Conjugation:	Unconjugated
Storage:	Store the antibody undiluted at 2-8°C for one month or (in aliquots) at -20°C to -70°C for longer. Avoid repeated freezing and thawing.
Stability:	Shelf life: one year from despatch.
Gene Name:	adhesion G protein-coupled receptor E2
Database Link:	<a href="#">Entrez Gene 30817 Human</a> <a href="#">Q9UHX3</a>



[View online »](#)

**Background:**

ADGRE2 / EMR2 is a member of the class B seven-span transmembrane (TM7) subfamily of G-protein coupled receptors. These proteins are characterized by an extended extracellular region with a variable number of N-terminal epidermal growth factor-like domains coupled to a TM7 domain via a mucin-like spacer domain. The encoded protein is expressed mainly in myeloid cells where it promotes cell-cell adhesion through interaction with chondroitin sulfate chains.

**Product images:**

CD312/EMR2 antibody staining of Formalin-Fixed Paraffin-Embedded Human Lung, Neutrophils at 2-24 ug/ml followed by biotinylated Goat anti-Rabbit IgG secondary antibody, Alkaline Phosphatase-Streptavidin and Chromogen.