

Product datasheet for **AP06936PU-N**

GPR37L1 (N-term, Extracel. Dom.) Rabbit Polyclonal Antibody

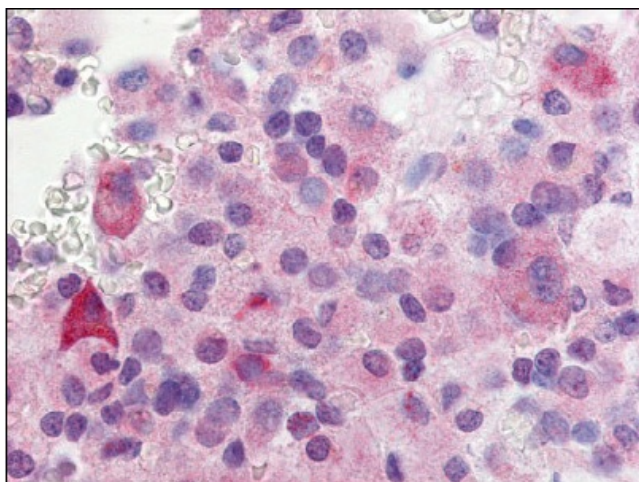
Product data:

Product Type:	Primary Antibodies
Applications:	ELISA, IHC
Recommended Dilution:	ELISA. Immunohistochemistry on Paraffin Sections: 10 µg/ml.
Reactivity:	Human
Host:	Rabbit
Clonality:	Polyclonal
Immunogen:	GPR37L1 antibody was raised against synthetic peptide from N-terminal extracellular domain of human GPR37L1.
Specificity:	This antibody detects G-Protein Coupled Receptor 37 Like 1 (GPR37L1), N-terminal extracellular domain.
Formulation:	PBS containing 0.09% sodium azide as preservative State: Aff - Purified State: Liquid purified Ig fraction
Concentration:	lot specific
Purification:	Immunoaffinity Chromatography
Conjugation:	Unconjugated
Storage:	Store the antibody undiluted at 2-8°C for one month or (in aliquots) at -20°C to -70°C for longer. Avoid repeated freezing and thawing.
Stability:	Shelf life: one year from despatch.
Gene Name:	G protein-coupled receptor 37 like 1
Database Link:	Entrez Gene 9283 Human O60883
Background:	GPR37L1 is an Orphan-A GPCR with an unknown ligand.
Synonyms:	ETBR-LP-2, G-protein coupled receptor 37-like 1



[View online »](#)

Product images:



Anterior Pituitary: Formalin-Fixed Paraffin-Embedded (FFPE)