

Product datasheet for **AP06934PU-N**

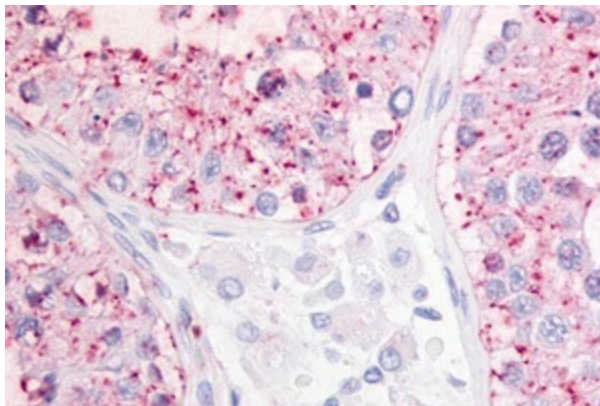
OGR1 (GPR68) (N-term) Rabbit Polyclonal Antibody

Product data:

Product Type:	Primary Antibodies
Applications:	ELISA, IHC
Recommended Dilution:	ELISA. Immunohistochemistry on Paraffin Sections: 5 - 10 µg/ml.
Reactivity:	Bat, Equine, Human, Bovine, Canine, Hamster, Marmoset, Monkey, Mouse, Porcine, Rabbit, Rat, Gorilla
Host:	Rabbit
Clonality:	Polyclonal
Immunogen:	Synthetic 17 amino acid peptide from N-terminal domain of human GPR68 / OGR1
Specificity:	This antibody detects OGR1 / GPR68 at N-term.
Formulation:	PBS containing 0.09% Sodium azide as preservative State: Aff - Purified State: Liquid Ig fraction
Concentration:	lot specific
Purification:	Immunoaffinity chromatography
Conjugation:	Unconjugated
Storage:	Store undiluted at 2-8°C for one month or (in aliquots) at -20°C to -80°C for longer. Avoid repeated freezing and thawing.
Stability:	Shelf life: one year from despatch.
Gene Name:	G protein-coupled receptor 68
Database Link:	Entrez Gene 8111 Human Q15743
Background:	OGR1, a Lysophospholipid/Lysosphingolipid Receptor, was isolated by degenerate PCR from an ovarian cell line cDNA library. It is not expressed in normal ovary. OGR1 binds sphingosylphosphorylcholine, a lipid molecule involved in cell growth and survival. Recently, OGR1 has been shown to act as a proton-sensing receptor stimulating inositol phosphate formation (Ludwig et al. 2003).
Synonyms:	Sphingosylphosphorylcholine receptor, G-protein coupled receptor 68, GPR12A



[View online »](#)

Product images:

Immunohistochemistry staining of human testis (Formalin-fixed, Paraffin-embedded tissue after heat-induced antigen retrieval) using GPR68 / OGR1 antibody.