

## Product datasheet for **AP06933PU-N**

### OGR1 (GPR68) (1st Extracel. Dom.) Rabbit Polyclonal Antibody

#### Product data:

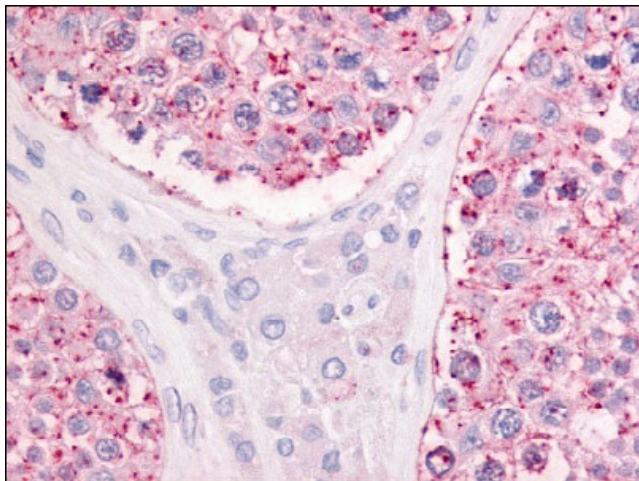
Product Type:	Primary Antibodies
Applications:	ELISA, IHC
Recommended Dilution:	<b>ELISA.</b> <b>Immunohistochemistry on Paraffin Sections:</b> 10 - 20 µg/ml.
Reactivity:	Human, Monkey, Rat, Mouse, Gorilla
Host:	Rabbit
Clonality:	Polyclonal
Immunogen:	Synthetic 18 amino acid peptide from 1st extracellular domain of human GPR68
Specificity:	This antibody detects G Protein-Coupled Receptor OGR1/GPR68, 1st extracellular domain.
Formulation:	PBS State: Aff - Purified State: Liquid purified Ig fraction Preservative: 0.09% Sodium Azide
Concentration:	lot specific
Purification:	Immunoaffinity Chromatography
Conjugation:	Unconjugated
Storage:	Store the antibody undiluted at 2-8°C for one month or (in aliquots) at -20°C to -70°C for longer. Avoid repeated freezing and thawing.
Stability:	Shelf life: one year from despatch.
Gene Name:	G protein-coupled receptor 68
Database Link:	<a href="#">Entrez Gene 8111 Human Q15743</a>
Background:	OGR1, a Lysophospholipid/Lyso sphingolipid Receptor, was isolated by degenerate PCR from an ovarian cell line cDNA library. It is not expressed in normal ovary. OGR1 binds sphingosylphosphorylcholine, a lipid molecule involved in cell growth and survival. Recently, OGR1 has been shown to act as a proton-sensing receptor stimulating inositol phosphate formation (Ludwig et al. 2003).



[View online »](#)

Synonyms: Sphingosylphosphorylcholine receptor, G-protein coupled receptor 68, GPR12A

**Product images:**



Testis: Formalin-Fixed Paraffin-Embedded (FFPE)