

Product datasheet for **AP06924PU-N**

GPR10 (PRLHR) (2nd Extracel. Dom.) Rabbit Polyclonal Antibody

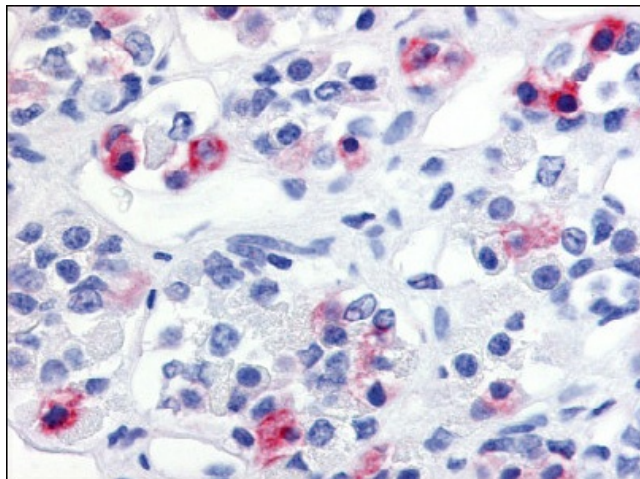
Product data:

Product Type:	Primary Antibodies
Applications:	ELISA, IHC
Recommended Dilution:	ELISA. Immunohistochemistry on Paraffin Sections: 20 µg/ml.
Reactivity:	Human, Rat, Mouse
Host:	Rabbit
Clonality:	Polyclonal
Immunogen:	PRLHR antibody was raised against synthetic peptide from 2nd extracellular domain of human PRLHR / GPR10.
Specificity:	This antibody detects Prolactin Releasing Hormone Receptor (GPR10) (PRLHR), 2nd extracellular domain.
Formulation:	PBS containing 0.09% sodium azide as preservative State: Aff - Purified State: Liquid purified Ig fraction
Concentration:	lot specific
Purification:	Immunoaffinity Chromatography
Conjugation:	Unconjugated
Storage:	Store the antibody undiluted at 2-8°C for one month or (in aliquots) at -20°C to -70°C for longer. Avoid repeated freezing and thawing.
Stability:	Shelf life: one year from despatch.
Gene Name:	prolactin releasing hormone receptor
Database Link:	Entrez Gene 2834 Human P49683
Background:	Prolactin releasing hormone receptor (hGR3/GPR10) is a Releasing Hormone Receptor that controls the secretion of prolactin from the anterior pituitary.
Synonyms:	PrRP receptor, PrRPR, GR3, G-protein coupled receptor 10



[View online »](#)

Product images:



Anterior Pituitary: Formalin-Fixed Paraffin-Embedded (FFPE)