

Product datasheet for **AP06808PU-N**

FLIP (CFLAR) Rabbit Polyclonal Antibody

Product data:

Product Type:	Primary Antibodies
Applications:	IHC, WB
Recommended Dilution:	Western blot: 1/500-1/1000. Immunohistochemistry on paraffin sections: 1/50 - 1/200.
Reactivity:	Human
Host:	Rabbit
Clonality:	Polyclonal
Immunogen:	Synthetic peptide, corresponding to amino acids 171-200 of Human FLIP.
Specificity:	This antibody detects endogenous levels of c-FLIP protein.
Formulation:	Phosphate buffered saline (PBS), pH 7.2. State: Aff - Purified State: Liquid purified Ig fraction (> 95% pure by SDS-PAGE). Preservative: 0.05% sodium azide
Concentration:	1.0 mg/ml
Purification:	Affinity Chromatography using epitope-specific immunogen.
Conjugation:	Unconjugated
Storage:	Store undiluted at 2-8°C for one month or (in aliquots) at -20°C for longer. Avoid repeated freezing and thawing.
Stability:	Shelf life: one year from despatch.
Predicted Protein Size:	~ 55 kDa
Gene Name:	CASP8 and FADD like apoptosis regulator
Database Link:	Entrez Gene 8837 Human O15519



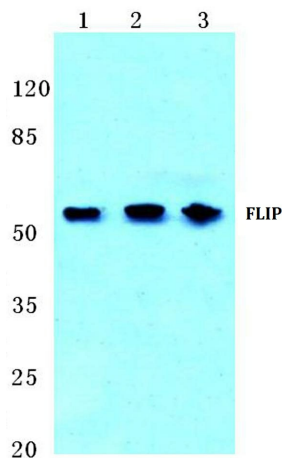
[View online »](#)

Background:

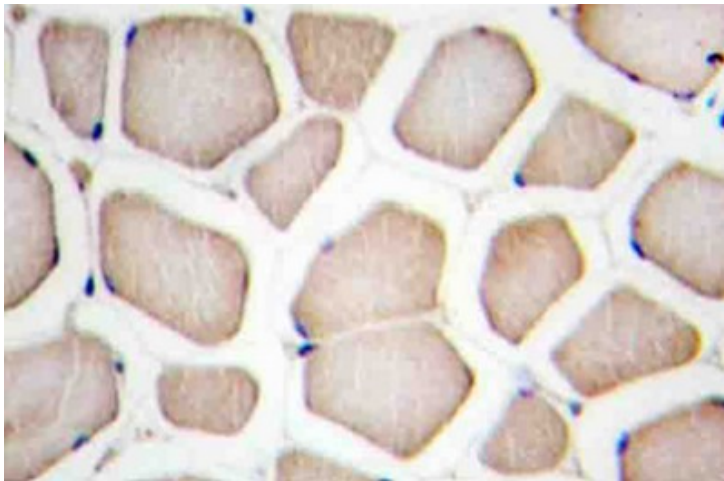
FLIP (FLICE inhibitory protein) is expressed as both long and short forms and is involved in the regulation of apoptosis. The short form of FLIP contains two death effector domains homologous to the death effector domain of the Fas-associated protein FADD. The long form of FLIP, which shares significant homology with the cysteine protease FLICE, contains an additional caspase-like domain, but lacks a catalytic active site and lacks the residues that form the substrate binding pocket in most caspases. FLIP has been designated by independent groups as Casper, I-FLICE, CLARP, FLAME-1 and MRIT. Although its exact role is still being elucidated, FLIP appears to be an important factor in the regulation of apoptosis downstream of all known death receptors.

Synonyms:

c-FLIP, CLARP, MRIT, CASH, FLAME-1, CASP8AP1, Usurpin

Product images:

Western blot (WB) analysis of FLIP antibody at 1/500 dilution Lane 1:HEK293T cell lysate Lane 2:sp2/0 cell lysate Lane 3:PC12 cell lysate



Immunohistochemistry (IHC) analysis of c-FLIP antibody in paraffin-embedded human colon carcinoma tissue