

Product datasheet for **AP06790PU-S**

AHA1 (AHSA1) Rabbit Polyclonal Antibody

Product data:

Product Type:	Primary Antibodies
Applications:	IHC, WB
Recommended Dilution:	Western blot: 1/500-1/1000. Immunohistochemistry on paraffin sections: 1/50-1/200.
Reactivity:	Human
Host:	Rabbit
Clonality:	Polyclonal
Immunogen:	Synthetic peptide, corresponding to amino acids 151-200 of Human AHA-1.
Specificity:	This antibody detects endogenous levels of AHA-1 protein. (region surrounding Thr183)
Formulation:	Phosphate buffered saline (PBS), pH 7.2. State: Aff - Purified State: Liquid purified Ig fraction Preservative: 0.05% sodium azide
Concentration:	1.0 mg/ml
Purification:	Affinity-chromatography using epitope-specific immunogen and the purity is > 95% (by SDS-PAGE)
Conjugation:	Unconjugated
Storage:	Store undiluted at 2-8°C for one month or (in aliquots) at -20°C for longer. Avoid repeated freezing and thawing.
Stability:	Shelf life: one year from despatch.
Predicted Protein Size:	~ 38 kDa
Gene Name:	activator of Hsp90 ATPase activity 1
Database Link:	Entrez Gene 10598 Human O95433



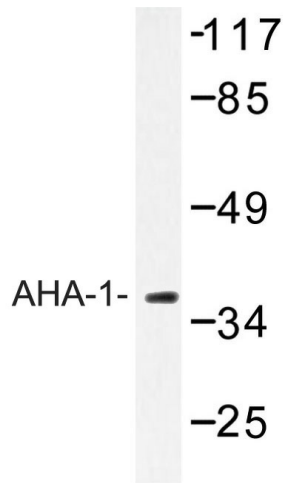
[View online »](#)

Background:

AHA-1 stimulates the inherent ATPase activity of yeast and human HSP 90 and interacts with the cytoplasmic tail of vesicular stomatitis virus glycoprotein. AHA-1 regulates HSP 90 by influencing the conformational state of the "ATP lid" and consequent N-terminal dimerization. It is crucial for cell viability under non-optimal growth conditions when HSP 90 levels are limiting. AHA-1 is a cytosolic protein and may transiently interact with the endoplasmic reticulum. It can have an affect on one step in the endoplasmic to Golgi trafficking. AHA-1 is expressed in numerous tissues, including brain, heart, skeletal muscle and kidney, and at lower levels in liver and placenta. It is induced by heat shock and treatment with the HSP 90 inhibitor 17-demethoxygeldanamycin.

Synonyms:

C14orf3, HSPC322

Product images:

Western blot (WB) analysis of AHA-1 antibody in extracts from HT-29 cells