

## Product datasheet for **AP06789PU-M**

### alpha 1b Adrenergic Receptor (ADRA1B) Rabbit Polyclonal Antibody

#### Product data:

Product Type:	Primary Antibodies
Applications:	IF, IHC, WB
Recommended Dilution:	<b>Western blot:</b> 1/500-1/1000. <b>Immunohistochemistry on paraffin sections:</b> 1/50-1/200. <b>Immunofluorescence:</b> 1/50-1/200.
Reactivity:	Human, Mouse, Rat
Host:	Rabbit
Clonality:	Polyclonal
Immunogen:	Synthetic peptide, corresponding to amino acids 261-310 of Human AR-β1.
Specificity:	This antibody detects endogenous levels of AR-β1 protein. (region surrounding Ala302)
Formulation:	Phosphate buffered saline (PBS), pH 7.2. State: Aff - Purified State: Liquid purified Ig fraction Preservative: 0.05% sodium azide
Concentration:	1.0 mg/ml
Purification:	Affinity-chromatography using epitope-specific immunogen and the purity is > 95% (by SDS-PAGE)
Conjugation:	Unconjugated
Storage:	Store undiluted at 2-8°C for one month or (in aliquots) at -20°C for longer. Avoid repeated freezing and thawing.
Stability:	Shelf life: one year from despatch.
Predicted Protein Size:	~ 51 kDa
Gene Name:	adrenoceptor alpha 1B
Database Link:	<a href="#">Entrez Gene 147 Human P35368</a>

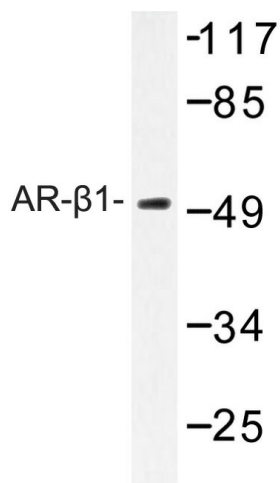


[View online »](#)

**Background:** Alpha-1B adrenergic receptors couple to Gq/11 and induce neoplastic transformation in NIH-3T3 cell transfectants. Alpha-1B receptors ( $\alpha 1B$ -AR) can form hetero-oligomers with alpha-1A and alpha-1D receptors.  $\alpha 1B$ -AR transcripts are abundant in heart, brain and kidney.

**Synonyms:** Alpha 1B-adrenoreceptor, Alpha 1B-adrenoceptor

**Product images:**



Western blot (WB) analysis of AR- $\beta 1$  antibody in extracts from HT-29 cells.