

## Product datasheet for **AP06788PU-N**

### gamma Adducin (ADD3) Rabbit Polyclonal Antibody

#### Product data:

Product Type:	Primary Antibodies
Applications:	IF, IHC, WB
Recommended Dilution:	<b>Western blot:</b> 1/500-1/1000. <b>Immunohistochemistry on paraffin sections:</b> 1/50-1/200. <b>Immunofluorescence:</b> 1/50-1/200.
Reactivity:	Human, Mouse, Rat
Host:	Rabbit
Clonality:	Polyclonal
Immunogen:	Synthetic peptide, corresponding to amino acids 420-471 of Human Adducin $\gamma$ .
Specificity:	This antibody detects endogenous levels of Adducin $\gamma$ protein. (region surrounding Pro452)
Formulation:	Phosphate buffered saline (PBS), pH 7.2. State: Aff - Purified State: Liquid purified Ig fraction Preservative: 15 mM sodium azide
Concentration:	1.0 mg/ml
Purification:	Affinity-chromatography using epitope-specific immunogen and the purity is > 95% (by SDS-PAGE)
Conjugation:	Unconjugated
Storage:	Store undiluted at 2-8°C for one month or (in aliquots) at -20°C for longer. Avoid repeated freezing and thawing.
Stability:	Shelf life: one year from despatch.
Predicted Protein Size:	~ 82 kDa
Gene Name:	adducin 3
Database Link:	<a href="#">Entrez Gene 120 Human Q9UEY8</a>



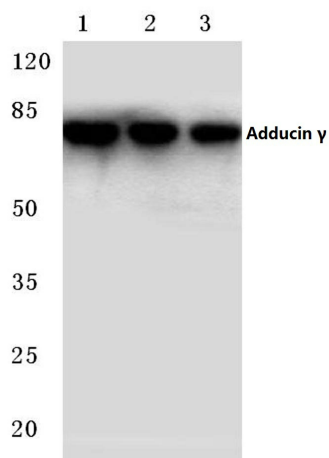
[View online »](#)

**Background:**

Adducins are a family of cytoskeleton proteins encoded by three genes ( $\alpha$ ,  $\beta$  and  $\gamma$ ). Adducin is a protein associated with the inner leaflet of the plasma membrane and is one of the proteins localized at the spectrin-actin junction of the membrane skeleton. The cortical actin cytoskeletal network is lost during apoptosis and adducins are central in the cortical actin network organization. Adducin  $\alpha$  is a cytoskeletal protein involved with sodium-pump activity in the renal tubule and is associated with hypertension. The expression of Adducin  $\alpha$  and Adducin  $\gamma$  is ubiquitous in contrast to the restricted expression of Adducin  $\beta$ . Adducin  $\beta$  is expressed at high levels in brain and hematopoietic tissues, such as bone marrow in humans, and spleen in mice.

**Synonyms:**

ADDL, Adducin-like protein 70, Adducin 3

**Product images:**

Western blot (WB) analysis of Adducin  $\gamma$  antibody at 1/500 dilution Lane 1:HeLa whole cell lysate Lane 2:NIH-3T3 whole cell lysate Lane 3:H9C2 whole cell lysate