

Product datasheet for **AP06787PU-S**

alpha 1a Adrenergic Receptor (ADRA1A) Rabbit Polyclonal Antibody

Product data:

Product Type:	Primary Antibodies
Applications:	IF, IHC, WB
Recommended Dilution:	Western blot: 1/500-1/1000. Immunofluorescence: 1/50-1/200. Immunohistochemistry on Paraffin Sections: 1/50-1/200.
Reactivity:	Human
Host:	Rabbit
Clonality:	Polyclonal
Immunogen:	Synthetic peptide, corresponding to amino acids 350-400 of Human AR- α 1A.
Specificity:	This antibody detects endogenous levels of AR-alpha1A protein. (region surrounding Gln365)
Formulation:	PBS, pH~7.2 State: Aff - Purified State: Liquid purified Ig fraction (> 95% pure by SDS-PAGE) Preservative: 0.05% Sodium Azide
Concentration:	1.0 mg/ml
Purification:	Affinity Chromatography using epitope-specific immunogen
Conjugation:	Unconjugated
Storage:	Store undiluted at 2-8°C for one month or (in aliquots) at -20°C for longer. Avoid repeated freezing and thawing.
Stability:	Shelf life: one year from despatch.
Predicted Protein Size:	~51 kDa
Gene Name:	adrenoceptor alpha 1A
Database Link:	Entrez Gene 148 Human P35348



[View online »](#)

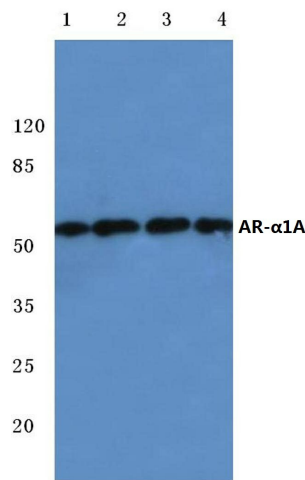
Background:

alpha1A-adrenergic receptors (alpha1A-ARs) mediate actions in the sympathetic nervous system through the binding of the catecholamines, epinephrine and norepinephrine. alpha1A-AR couples to Gq/11 and regulates blood pressure due to changes in vascular tone and cardiac output. Alternative splicing of the ADRA1A gene generates four isoforms with distinct C-termini, and the different expression profile of these subtypes produces distinct patterns of activation. alpha1A-AR transcripts are abundant in heart, brain, liver and prostate. alpha1A-AR transcript sizes of 6.0, 4.0, 3.0, and 2.0 kb have been detected in liver. Transcripts of 6.0, 4.0 and 3.0 kb have been detected in heart, and transcripts of 6.0 and 4.0 kb have been detected in prostate.

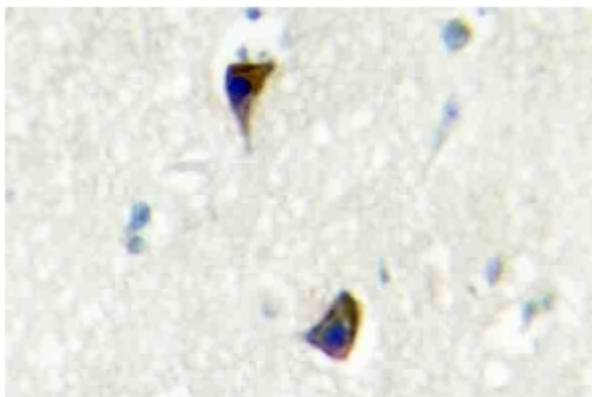
Synonyms:

ADRA1C, Alpha 1A-adrenoreceptor, Alpha 1A-adrenoceptor, Alpha-1C adrenergic receptor, Alpha-adrenergic receptor 1c

Product images:



Western blot (WB) analysis of AR-αA antibody at 1/500 dilution Lane 1: MCF-7 whole cell lysate Lane 2: Jurkat whole cell lysate Lane 3: NIH-3T3 whole cell lysate Lane 4: PC12 whole cell lysate



Immunohistochemistry (IHC) analyzes of AR-alpha-1A antibody in paraffin-embedded human brain tissue.