

Product datasheet for **AP06785PU-S**

ACTN3 Rabbit Polyclonal Antibody

Product data:

Product Type:	Primary Antibodies
Applications:	IF, WB
Recommended Dilution:	Western blot: 1/500-1/1000. Immunofluorescence: 1/50-1/200.
Reactivity:	Human, Mouse, Rat
Host:	Rabbit
Clonality:	Polyclonal
Immunogen:	Synthetic peptide, corresponding to the N-terminus of Human Actinin- α 3.
Specificity:	This antibody detects endogenous levels of Actinin- α 3 protein. (region surrounding Glu25)
Formulation:	Phosphate buffered saline (PBS), pH 7.2. State: Aff - Purified State: Liquid purified Ig fraction Preservative: 0.05% sodium azide
Concentration:	1.0 mg/ml
Purification:	Affinity-chromatography using epitope-specific immunogen and the purity is > 95% (by SDS-PAGE)
Conjugation:	Unconjugated
Storage:	Store undiluted at 2-8°C for one month or (in aliquots) at -20°C for longer. Avoid repeated freezing and thawing.
Stability:	Shelf life: one year from despatch.
Predicted Protein Size:	~ 103 kDa
Gene Name:	actinin alpha 3 (gene/pseudogene)
Database Link:	Entrez Gene 89 Human Q08043



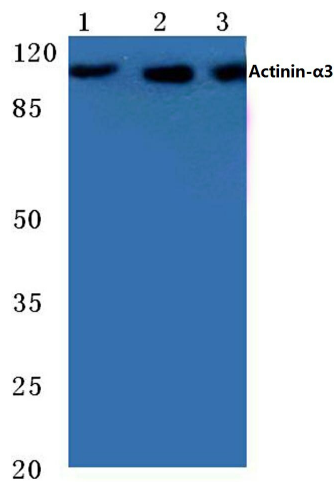
[View online »](#)

Background:

The spectrin gene family encodes a diverse group of cytoskeletal proteins that include spectrins, dystrophins and α -actinins. There are four tissue-specific α -actinins, namely α -actinin-1, α -actinin-2, α -actinin-3 and α -actinin-4, which are localized to muscle and non-muscle cells, including skeletal, cardiac and smooth muscle cells, as well as within the cytoskeleton. Each α -actinin protein contains one Actin-binding domain, two calponin-homology domains, two EF-hand domains and four spectrin repeats, through which they function as bundling proteins that can cross-link F-Actin, thus anchoring Actin to a variety of intracellular structures. Defects in the gene encoding α -actinin-4 are the cause of focal segmental glomerulosclerosis 1 (FSGS1), a common renal lesion characterized by decreasing kidney function and, ultimately, renal failure.

Synonyms:

Alpha actinin skeletal muscle isoform 3

Product images:

Western blot (WB) analysis of Actinin- α 3 antibody at 1/500 dilution Lane 1: Hela whole cell lysate Lane 2: Mouse muscle tissue lysate Lane 3: Rat muscle tissue lysate