

Product datasheet for **AP06784PU-N**

CD83 Rabbit Polyclonal Antibody

Product data:

Product Type:	Primary Antibodies
Applications:	IHC, WB
Recommended Dilution:	Western blot: 1/500-1/1000. Immunohistochemistry on Paraffin Sections: 1/50-1/200.
Reactivity:	Human, Mouse, Rat
Host:	Rabbit
Clonality:	Polyclonal
Immunogen:	Synthetic peptide, corresponding to amino acids 100-150 of Human CD83.
Specificity:	This antibody detects endogenous levels of CD83 protein. (region surrounding Pro130)
Formulation:	Phosphate buffered saline (PBS), pH~7.2 State: Aff - Purified State: Liquid purified Ig fraction (>95% pure by SDS-PAGE), 50% glycerol Preservative: 0.02% Sodium Azide
Concentration:	1.0 mg/ml
Purification:	Affinity Chromatography using epitope-specific immunogen
Conjugation:	Unconjugated
Storage:	Store undiluted at 2-8°C one month or (in aliquots) at -20°C for longer. Avoid repeated freezing and thawing.
Stability:	Shelf life: one year from despatch.
Predicted Protein Size:	~23, 45 kDa
Gene Name:	CD83 molecule
Database Link:	Entrez Gene 9308 Human Q01151



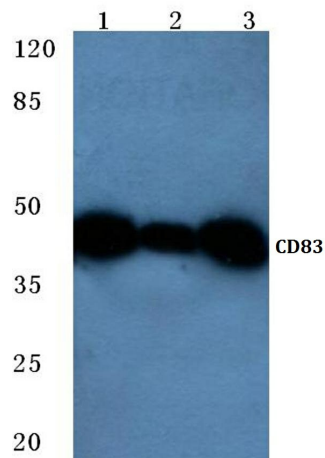
[View online »](#)

Background:

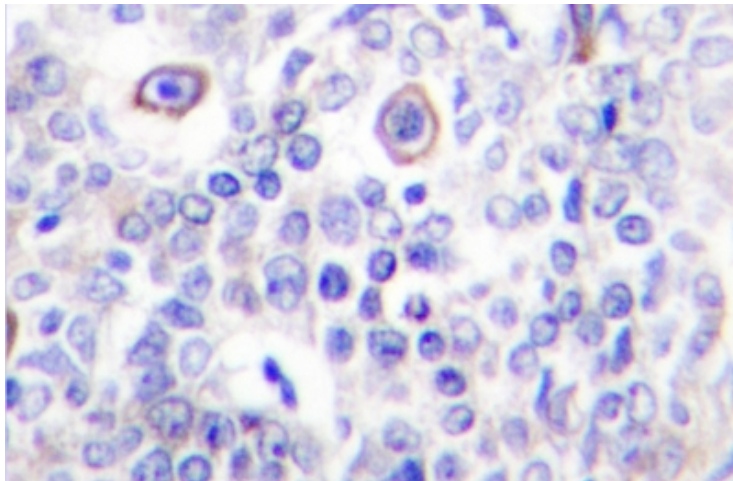
CD83 is a heavily glycosylated membrane protein of the immunoglobulin (Ig) superfamily that is expressed in mature dendritic cells, Langerhans cells and interdigitating reticulum cells within lymphoid tissues. Structurally, CD83 resembles other Ig superfamily members, which have an extracellular V-type Ig-like domain, a single transmembrane domain and a 40 residue cytoplasmic tail. CD83 expression is used as a marker for mature, antigen presenting dendritic cells that are capable of generating tumor-specific T cell immunity, a phenotype with implications as an anticancer vaccine. CD83-IgG1(fc) chimera studies indicate that CD83 is a sialic acid-binding, Ig-like lectin (Siglec) adhesion molecule that is involved in cell adhesion/signaling by hosting dendritic cell interactions with monocytes and CD8+ T cells.

Synonyms:

HB15

Product images:

Western blot (WB) analysis of CD83 antibody at 1/500 dilution Lane 1:Hela cell lysate Lane 2:sp2/0 cell lysate Lane 3:PC12 cell lysate



Immunohistochemistry (IHC) analyzes of CD83 antibody in paraffin-embedded human lung carcinoma tissue