

## Product datasheet for **AP06783PU-M**

### CDC20 Rabbit Polyclonal Antibody

#### Product data:

|                         |   |
|-------------------------|---|
| Product Type:           | Primary Antibodies  |
| Applications:           | IHC, WB   |
| Recommended Dilution:   | <b>Western blot:</b> 1/500-1/1000.<br><b>Immunohistochemistry on paraffin sections:</b> 1/50-1/200.   |
| Reactivity:             | Human, Mouse, Rat   |
| Host:                   | Rabbit  |
| Clonality:              | Polyclonal  |
| Immunogen:              | Synthetic peptide, corresponding to amino acids 80-130 of Human Cdc20.  |
| Specificity:            | This antibody detects endogenous levels of Cdc20 protein.<br>(region surrounding Gln105)  |
| Formulation:            | Phosphate buffered saline (PBS), pH 7.2.<br>State: Aff - Purified<br>State: Liquid purified Ig fraction<br>Preservative: 0.05% sodium azide |
| Concentration:          | 1.0 mg/ml   |
| Purification:           | Affinity-chromatography using epitope-specific immunogen and the purity is > 95% (by SDS-PAGE)  |
| Conjugation:            | Unconjugated  |
| Storage:                | Store undiluted at 2-8°C for one month or (in aliquots) at -20°C for longer.<br>Avoid repeated freezing and thawing.                        |
| Stability:              | Shelf life: one year from despatch.   |
| Predicted Protein Size: | ~ 55 kDa  |
| Gene Name:              | cell division cycle 20  |
| Database Link:          | <a href="#">Entrez Gene 991 Human Q12834</a>  |



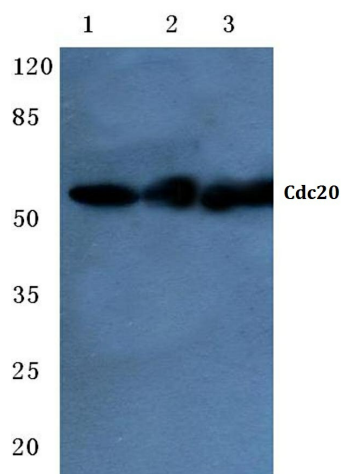
[View online »](#)

**Background:**

Cell cycle progression is controlled at a point late in G1 designated Start. Passage through Start requires the activity of the cyclin-dependent protein kinase Cdc28. Transition from G1 to S phase requires the association of Cdc28 with members of the G1 cyclin family. Exit from mitosis and initiation of the next cell cycle requires a complex of proteins designated the anaphase-promoting complex (APC). This complex consists of two proteins, Cdc16 and Cdc27 (also referred to as Snb1), which are involved in limiting DNA replication to once per cell cycle. Cdc23, another component of the APC, is required for both entering and exiting anaphase, and is important for the proper separation of sister chromatids. The APC is thought to be stabilized by Cdc26 (also known as Scd26). In addition to these APC proteins, Cdc5 is also required for completion of mitosis. In contrast, Cdc20 acts as a DNA-damage induced checkpoint, preventing mitosis when DNA damage has occurred.

**Synonyms:**

p55CDC

**Product images:**


Western blot (WB) analysis of Cdc20 antibody at 1/500 dilution Lane 1: Hela whole cell lysate Lane 2: Raw264.7 whole cell lysate Lane 3: Rat liver tissue lysate