

## Product datasheet for **AP06782PU-N**

### Apc6 (CDC16) Rabbit Polyclonal Antibody

#### Product data:

Product Type:	Primary Antibodies
Applications:	IHC, WB
Recommended Dilution:	<b>Western blot:</b> 1/500-1/1000. <b>Immunohistochemistry on paraffin sections:</b> 1/50-1/200.
Reactivity:	Human, Mouse, Rat
Host:	Rabbit
Clonality:	Polyclonal
Immunogen:	Synthetic peptide, corresponding to amino acids 180-230 of Human Cdc16.
Specificity:	This antibody detects endogenous levels of Cdc16 protein. (region surrounding Glu206)
Formulation:	Phosphate buffered saline (PBS), pH 7.2. State: Aff - Purified State: Liquid purified Ig fraction Preservative: 0.05% sodium azide
Concentration:	1.0 mg/ml
Purification:	Affinity-chromatography using epitope-specific immunogen and the purity is > 95% (by SDS-PAGE)
Conjugation:	Unconjugated
Storage:	Store undiluted at 2-8°C for one month or (in aliquots) at -20°C for longer. Avoid repeated freezing and thawing.
Stability:	Shelf life: one year from despatch.
Predicted Protein Size:	~ 72 kDa
Gene Name:	cell division cycle 16
Database Link:	<a href="#">Entrez Gene 8881 Human Q13042</a>



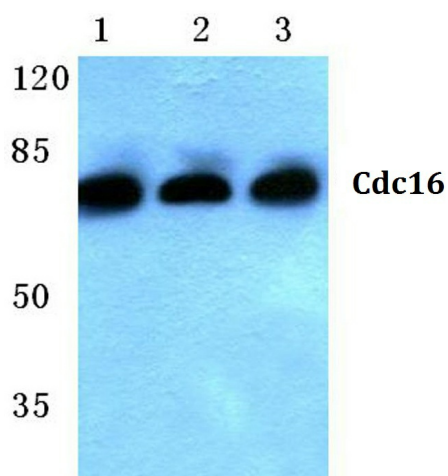
[View online »](#)

**Background:**

Cell cycle events are regulated by the sequential activation and deactivation of cyclin dependent kinases (Cdks) and by the proteolysis of cyclins. The cell division cycle (Cdc) genes are required at various points in the cell cycle. Cdc25A, Cdc25B and Cdc25C protein Tyrosine phosphatases function as mitotic activators by dephosphorylating Cdc2 p34 on regulatory Tyrosine residues. Cdc6 is the human homolog of *Saccharomyces cerevisiae* Cdc6, which is involved in the initiation of DNA replication. Cdc37 appears to facilitate Cdk4/cyclin D1 complex formation and has been shown to form a stable complex with HSP 90. Cdc34, Cdc27 and Cdc16 function as ubiquitin-conjugating enzymes. Cdc34 is thought to be the structural and functional homolog of *Saccharomyces cerevisiae* Cdc34, which is essential for the G1 to S phase transition. Cdc16 and Cdc27 are components of the APC (anaphase-promoting complex) which ubiquitinates cyclin B, resulting in cyclin B/Cdk complex degradation.

**Synonyms:**

ANAPC6, Cell division cycle protein 16 homolog, CDC16Hs

**Product images:**

Western blot (WB) analysis of Cdc16 antibody at 1/500 dilution. Lane 1: HEK293T whole cell lysate. Lane 2: sp2/0 whole cell lysate. Lane 3: PC12 whole cell lysate.