

Product datasheet for **AP06775PU-M**

CYP2A13 Rabbit Polyclonal Antibody

Product data:

Product Type:	Primary Antibodies
Applications:	IF, IHC, WB
Recommended Dilution:	Western blot: 1/500-1/1000. Immunohistochemistry on paraffin sections: 1/50-1/200. Immunofluorescence: 1/50-1/200.
Reactivity:	Human
Host:	Rabbit
Clonality:	Polyclonal
Immunogen:	Synthetic peptide, corresponding to amino acids 306-360 of Human CYP2A13.
Specificity:	This antibody detects endogenous levels of CYP2A13 protein. (region surrounding asn338)
Formulation:	Phosphate buffered saline (PBS), pH 7.2. State: Aff - Purified State: Liquid purified Ig fraction Preservative: 0.05% sodium azide
Concentration:	1.0 mg/ml
Purification:	Affinity-chromatography using epitope-specific immunogen and the purity is > 95% (by SDS-PAGE)
Conjugation:	Unconjugated
Storage:	Store undiluted at 2-8°C for one month or (in aliquots) at -20°C for longer. Avoid repeated freezing and thawing.
Stability:	Shelf life: one year from despatch.
Predicted Protein Size:	~ 56 kDa
Gene Name:	cytochrome P450 family 2 subfamily A member 13
Database Link:	Entrez Gene 1553 Human Q16696



[View online »](#)

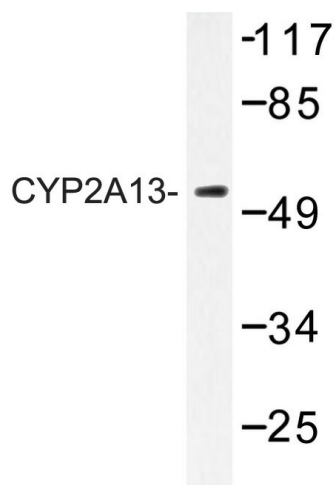
Background: CYP2A13 belongs to the cytochrome P450 superfamily. These enzymes are monooxygenases which catalyze several reactions related to drug metabolism and to the synthesis of cholesterol, steroids and other lipids. CYP2A13 is involved in the metabolism of 4-(methylnitrosamino)-1-(3-pyridyl)-1-butanone, a nitrosamine specific to tobacco.

Synonyms: Cytochrome P450 2A13, CYP11A13

Protein Families: Druggable Genome, Transmembrane

Protein Pathways: Caffeine metabolism, Drug metabolism - cytochrome P450, Drug metabolism - other enzymes, Metabolic pathways, Retinol metabolism

Product images:



Western blot (WB) analyzes of CYP2A13 antibody in extracts from HeLa cells