

## Product datasheet for **AP06774PU-N**

### Cytochrome P450 2A6 (CYP2A6) Rabbit Polyclonal Antibody

#### Product data:

Product Type:	Primary Antibodies
Applications:	IF, WB
Recommended Dilution:	<b>Western blot:</b> 1/500-1/1000. <b>Immunofluorescence:</b> 1/50-1/200.
Reactivity:	Human
Host:	Rabbit
Clonality:	Polyclonal
Immunogen:	Synthetic peptide, corresponding to amino acids 101-150 of Human CYP2A6.
Specificity:	This antibody detects endogenous levels of CYP2A6 protein. (region surrounding Glu131)
Formulation:	Phosphate buffered saline (PBS), pH 7.2. State: Aff - Purified State: Liquid purified Ig fraction Preservative: 0.05% sodium azide
Concentration:	1.0 mg/ml
Purification:	Affinity-chromatography using epitope-specific immunogen and the purity is > 95% (by SDS-PAGE)
Conjugation:	Unconjugated
Storage:	Store undiluted at 2-8°C for one month or (in aliquots) at -20°C for longer. Avoid repeated freezing and thawing.
Stability:	Shelf life: one year from despatch.
Predicted Protein Size:	~ 56 kDa
Gene Name:	cytochrome P450 family 2 subfamily A member 6
Database Link:	<a href="#">Entrez Gene 1548 Human P11509</a>



[View online »](#)

**Background:**

The immunosuppressant cyclosporin A (CsA) forms a trimolecular complex with cyclophilin and calcineurins to inhibit calcineurin phosphatase activity. Cyclophilins are conserved, ubiquitous and abundant cytosolic peptidyl-prolyl is-trans isomerases that accelerate the isomerization of XaaPro peptide bonds and the refolding of proteins. Human cyclophilin A (CyPA), an intracellular protein of 165 amino acids, is the target of the CsA and is encoded by a single unique gene conserved from yeast to humans. CyPA is involved in T cell differentiation and proliferation and is highly expressed in brain. CyPA is incorporated into the virion of the type 1 human immunodeficiency virus (HIV-1) via a direct interaction with the capsid domain of the viral Gag polyprotein and is crucial for efficient viral replication.

**Synonyms:**

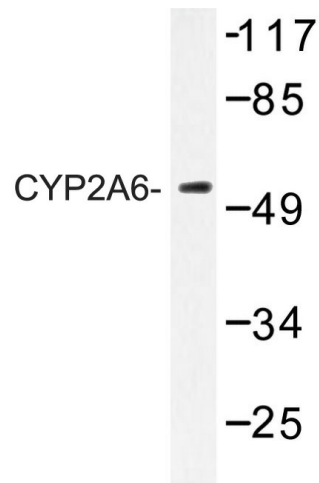
CYP2A3, Cytochrome P450 2A6, CYP11A6, CYP11A3

**Protein Families:**

Druggable Genome, P450, Transmembrane

**Protein Pathways:**

Caffeine metabolism, Drug metabolism - cytochrome P450, Drug metabolism - other enzymes, Metabolic pathways, Retinol metabolism

**Product images:**

Western blot (WB) analyzes of CYP2A6 antibody in extracts from Jurkat cells.