

## Product datasheet for **AP06773PU-N**

### CYP27A1 Rabbit Polyclonal Antibody

#### Product data:

|                         |   |
|-------------------------|---|
| Product Type:           | Primary Antibodies  |
| Applications:           | ELISA, IF, IHC, WB  |
| Recommended Dilution:   | <b>Western blot:</b> 1/500-1/1000.<br><b>Immunofluorescence:</b> 1/50-1/200.<br><b>Immunohistochemistry on Paraffin Sections:</b> 1/50-1/200.                   |
| Reactivity:             | Human   |
| Host:                   | Rabbit  |
| Clonality:              | Polyclonal  |
| Immunogen:              | Synthetic peptide corresponding to amino acids 100-150 of Human CYP27A1.  |
| Specificity:            | This antibody detects endogenous levels of CYP27A1 protein.<br>(region surrounding Glu131)  |
| Formulation:            | Phosphate buffered saline (PBS), pH 7.2.<br>State: Aff - Purified<br>State: Liquid purified Ig fraction (> 95% by SDS-PAGE)<br>Preservative: 0.05% Sodium Azide |
| Concentration:          | 1.0 mg/ml   |
| Purification:           | Affinity Chromatography using epitope-specific immunogen  |
| Conjugation:            | Unconjugated  |
| Storage:                | Store undiluted at 2-8°C for one month or (in aliquots) at -20°C for longer.<br>Avoid repeated freezing and thawing.  |
| Stability:              | Shelf life: one year from despatch.   |
| Predicted Protein Size: | ~60 kDa   |
| Gene Name:              | cytochrome P450 family 27 subfamily A member 1  |
| Database Link:          | <a href="#">Entrez Gene 1593 Human Q02318</a>   |



[View online »](#)

**Background:**

The immunosuppressant cyclosporin A (CsA) forms a trimolecular complex with cyclophilin and calcineurins to inhibit calcineurin phosphatase activity. Cyclophilins are conserved, ubiquitous and abundant cytosolic peptidyl-prolyl cis-trans isomerases that accelerate the isomerization of XaaPro peptide bonds and the refolding of proteins. Human cyclophilin A (CyPA), an intracellular protein of 165 amino acids, is the target of the CsA and is encoded by a single unique gene conserved from yeast to humans. CyPA is involved in T cell differentiation and proliferation and is highly expressed in brain. CyPA is incorporated into the virion of the type 1 human immunodeficiency virus (HIV-1) via a direct interaction with the capsid domain of the viral Gag polyprotein and is crucial for efficient viral replication.

**Synonyms:**

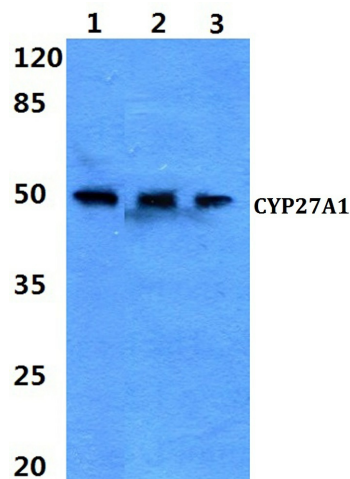
CYP27, Cytochrome P450 27, Cytochrome P-450C27/25, Sterol 26-hydroxylase, Sterol 27-hydroxylase, Vitamin D3-25-hydroxylase

**Protein Families:**

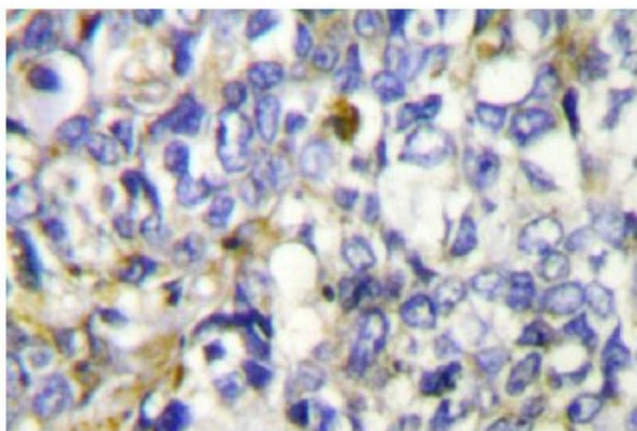
Druggable Genome, P450

**Protein Pathways:**

Metabolic pathways, PPAR signaling pathway, Primary bile acid biosynthesis

**Product images:**

Western blot (WB) analysis of CYP27A1 antibody at 1/500 dilution. Lane 1: HeLa whole cell lysate, Lane 2: Raw264.7 whole cell lysate, Lane 3: PC12 whole cell lysate.



Immunohistochemistry (IHC) analyzes of CYP27A1 antibody in paraffin-embedded human lung carcinoma tissue.