

## Product datasheet for **AP06773PU-M**

### CYP27A1 Rabbit Polyclonal Antibody

#### Product data:

Product Type:	Primary Antibodies
Applications:	ELISA, IF, IHC, WB
Recommended Dilution:	<b>Western blot:</b> 1/500-1/1000. <b>Immunofluorescence:</b> 1/50-1/200. <b>Immunohistochemistry on Paraffin Sections:</b> 1/50-1/200.
Reactivity:	Human
Host:	Rabbit
Clonality:	Polyclonal
Immunogen:	Synthetic peptide corresponding to amino acids 100-150 of Human CYP27A1.
Specificity:	This antibody detects endogenous levels of CYP27A1 protein. (region surrounding Glu131)
Formulation:	Phosphate buffered saline (PBS), pH 7.2. State: Aff - Purified State: Liquid purified Ig fraction (> 95% by SDS-PAGE) Preservative: 0.05% Sodium Azide
Concentration:	1.0 mg/ml
Purification:	Affinity Chromatography using epitope-specific immunogen
Conjugation:	Unconjugated
Storage:	Store undiluted at 2-8°C for one month or (in aliquots) at -20°C for longer. Avoid repeated freezing and thawing.
Stability:	Shelf life: one year from despatch.
Predicted Protein Size:	~60 kDa
Gene Name:	cytochrome P450 family 27 subfamily A member 1
Database Link:	<a href="#">Entrez Gene 1593 Human Q02318</a>



[View online »](#)

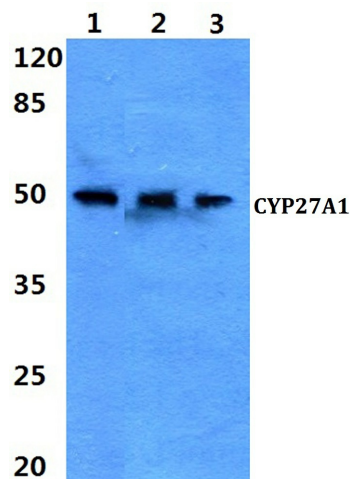
**Background:** The immunosuppressant cyclosporin A (CsA) forms a trimolecular complex with cyclophilin and calcineurins to inhibit calcineurin phosphatase activity. Cyclophilins are conserved, ubiquitous and abundant cytosolic peptidyl-prolyl cis-trans isomerases that accelerate the isomerization of XaaPro peptide bonds and the refolding of proteins. Human cyclophilin A (CyPA), an intracellular protein of 165 amino acids, is the target of the CsA and is encoded by a single unique gene conserved from yeast to humans. CyPA is involved in T cell differentiation and proliferation and is highly expressed in brain. CyPA is incorporated into the virion of the type 1 human immunodeficiency virus (HIV-1) via a direct interaction with the capsid domain of the viral Gag polyprotein and is crucial for efficient viral replication.

**Synonyms:** CYP27, Cytochrome P450 27, Cytochrome P-450C27/25, Sterol 26-hydroxylase, Sterol 27-hydroxylase, Vitamin D3-25-hydroxylase

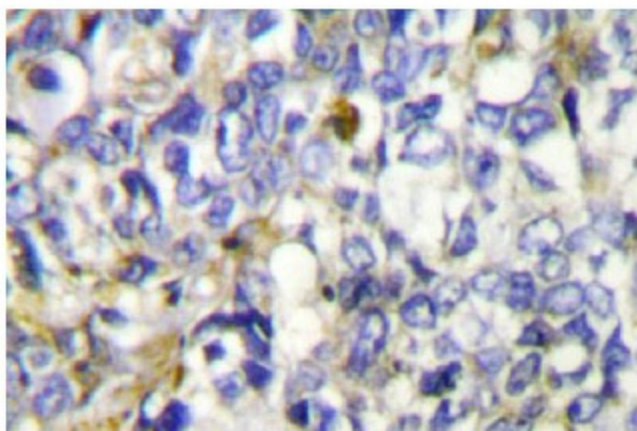
**Protein Families:** Druggable Genome, P450

**Protein Pathways:** Metabolic pathways, PPAR signaling pathway, Primary bile acid biosynthesis

### Product images:



Western blot (WB) analysis of CYP27A1 antibody at 1/500 dilution Lane 1:Hela whole cell lysate  
Lane 2:Raw264.7 whole cell lysate Lane 3:PC12 whole cell lysate



Immunohistochemistry (IHC) analyzes of CYP27A1 antibody in paraffin-embedded human lung carcinoma tissue.