

Product datasheet for **AP06769PU-N**

5 HT1A (HTR1A) Rabbit Polyclonal Antibody

Product data:

Product Type:	Primary Antibodies
Applications:	IF, IHC, WB
Recommended Dilution:	Western blot: 1/500 - 1/1000. Immunohistochemistry on paraffin sections: 1/50 - 1/200. Immunofluorescence: 1/50 - 1/200.
Reactivity:	Human, Mouse, Rat
Host:	Rabbit
Clonality:	Polyclonal
Immunogen:	Synthetic peptide, corresponding to amino acids 291-340 of Human SR-1A.
Specificity:	This antibody detects endogenous levels of SR-1A protein. (region surrounding Phe321)
Formulation:	Phosphate buffered saline (PBS), pH 7.2 State: Aff - Purified State: Liquid purified Ig fraction Preservative: 0.05% sodium azide
Concentration:	1.0 mg/ml
Purification:	Affinity chromatography (>95% pure (SDS-PAGE))
Conjugation:	Unconjugated
Storage:	Store undiluted at 2-8°C for one month or (in aliquots) at -20°C for longer. Avoid repeated freezing and thawing.
Stability:	Shelf life: one year from despatch.
Predicted Protein Size:	~ 46 kDa
Gene Name:	5-hydroxytryptamine receptor 1A
Database Link:	Entrez Gene 3350 Human P08908



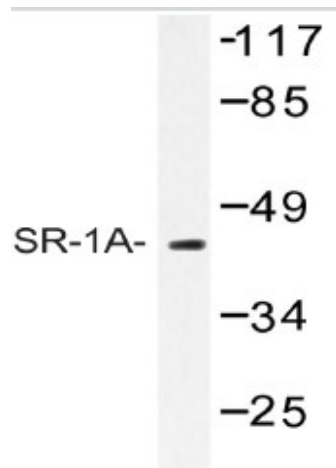
[View online »](#)

Background:

The members of the G protein-coupled receptor family are distinguished by their slow transmitting response to ligand binding. These seven transmembrane proteins include the adrenergic, serotonin and dopamine receptors. The effect of the signaling molecule can be excitatory or inhibitory depending on the type of receptor to which it binds. β -adrenergic bound to adrenaline activates adenylyl cyclase, while α 2-adrenergic receptor bound to adrenaline inhibits adenylyl cyclase. Like the α 2-adrenergic receptor, serotonin receptor functions are also mediated by G proteins that inhibit the activity of adenylyl cyclase. The serotonin receptors have been classified into several categories, designated SR-1–7 (5HT1–7). Subtypes within the SR-1 group include SR-1A, -1B, -1D, -1E and -1F.

Synonyms:

5-hydroxytryptamine receptor 1A, ADRB2RL1, ADRBRL1, 5-HT1A, 5-HT-1A

Product images:

Western blot (WB) analyzes of SR-1A antibody in extracts from HepG2 cells.



Immunohistochemistry (IHC) analyzes of SR-1A antibody in paraffin-embedded human brain tissue.