

Product datasheet for **AP06766PU-M**

14-3-3 epsilon (YWHAE) Rabbit Polyclonal Antibody

Product data:

| | |
|-------------------------|---|
| Product Type: | Primary Antibodies |
| Applications: | ELISA, IF, IHC, WB |
| Recommended Dilution: | Western blot: 1/500-1/1000. Immunofluorescence: 1/50-1/200. Immunohistochemistry on Paraffin Sections: 1/50-1/200. |
| Reactivity: | Human, Mouse, Rat |
| Host: | Rabbit |
| Clonality: | Polyclonal |
| Immunogen: | Synthetic peptide, corresponding to amino acids 200-250 of Human 14-3-3 ε. |
| Specificity: | This antibody detects endogenous levels of 14-3-3 ε protein. (region surrounding Asp238) |
| Formulation: | Phosphate buffered saline (PBS), pH~7.2 State: Aff - Purified State: Liquid purified Ig fraction (> 95% pure by SDS-PAGE) Preservative: 0.05% Sodium Azide |
| Concentration: | 1.0 mg/ml |
| Purification: | Affinity Chromatography using epitope-specific immunogen |
| Conjugation: | Unconjugated |
| Storage: | Store undiluted at 2-8° for one month or (in aliquots) at -20°C for longer. Avoid repeated freezing and thawing. |
| Stability: | Shelf life: one year from despatch. |
| Predicted Protein Size: | ~29 kDa |
| Gene Name: | tyrosine 3-monooxygenase/tryptophan 5-monooxygenase activation protein epsilon |
| Database Link: | Entrez Gene 7531 Human P62258 |



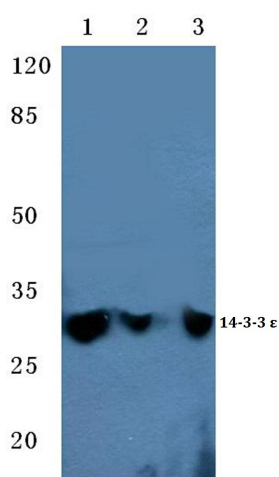
[View online »](#)

Background:

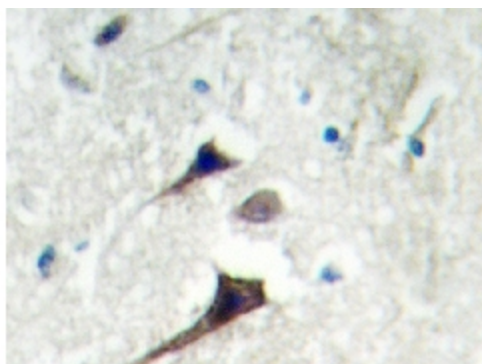
14-3-3 proteins regulate many cellular processes relevant to cancer biology, notably apoptosis, mitogenic signaling and cell-cycle checkpoints. Seven isoforms comprise this family of signaling intermediates, denoted 14-3-3 β , γ , ϵ , ζ , η , θ and σ . 14-3-3 proteins form dimers that present two binding sites for ligand proteins, thereby bringing together two proteins that may not otherwise associate. These ligands largely share a 14-3-3 consensus binding motif and exhibit serine/threonine phosphorylation. 14-3-3 proteins function in broad regulation of these ligand proteins, by cytoplasmic sequestration, occupation of interaction domains and import/export sequences, prevention of degradation, activation/repression of enzymatic activity and facilitation of protein modification, and thus loss of expression contributes to a vast array of pathogenic cellular activities.

Synonyms:

14-3-3E, YWHAE

Product images:


Western blot (WB) analysis of 14-3-3 μ antibody at 1/500 dilution Lane 1:HEK293T cell lysate Lane 2:sp2/0 cell lysate Lane 3:H9C2 cell lysate



Immunohistochemistry analyzes of 14-3-3 μ antibody in Paraffin-Embedded Human brain tissue.