

## Product datasheet for **AP06764PU-M**

### TBX22 Rabbit Polyclonal Antibody

#### Product data:

Product Type:	Primary Antibodies
Applications:	IHC, WB
Recommended Dilution:	<b>Western blot:</b> 1/500-1/1000. <b>Immunohistochemistry on paraffin sections:</b> 1/50-1/200.
Reactivity:	Human
Host:	Rabbit
Clonality:	Polyclonal
Immunogen:	Synthetic peptide, corresponding to the N-terminal of Human TBX22.
Specificity:	This antibody detects endogenous levels of TBX22 protein. (region surrounding Ala30)
Formulation:	Phosphate buffered saline (PBS), pH 7.2. State: Aff - Purified State: Liquid purified Ig fraction Preservative: 15 mM sodium azide
Concentration:	1.0 mg/ml
Purification:	Affinity-chromatography using epitope-specific immunogen and the purity is > 95% (by SDS-PAGE)
Conjugation:	Unconjugated
Storage:	Store undiluted at 2-8°C for one month or (in aliquots) at -20°C for longer. Avoid repeated freezing and thawing.
Stability:	Shelf life: one year from despatch.
Predicted Protein Size:	~ 60 kDa
Gene Name:	T-box 22
Database Link:	<a href="#">Entrez Gene 50945 Human Q9Y458</a>



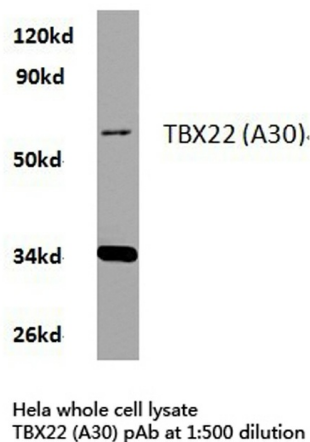
[View online »](#)

**Background:**

The T-box (TBX) motif is present in a family of genes whose structural features and expression patterns support their involvement in developmental gene regulation. The TBX gene family are largely conserved throughout metazoan evolution, and these genes code for putative transcription factors that share a uniquely defining DNA-binding domain. TBX genes are a family of developmental regulators with more than 20 members recently identified in invertebrates and vertebrates. Mutations in TBX genes are associated with the onset of several human diseases. Our understanding of functional mechanisms of TBX products has come mainly from the prototypical T/Brachyury, which is a transcription activator. The TBX genes constitute a family of transcriptional regulatory genes that are implicated in a variety of developmental processes ranging from the formation of germ layers to the organizational patterning of the central nervous system.

**Synonyms:**

TBOX22, T-box protein 22

**Product images:**


Western blot (WB) analysis of TBX22 antibody in extracts from hela cells.