

Product datasheet for **AP06763PU-N**

YBX2 Rabbit Polyclonal Antibody

Product data:

Product Type:	Primary Antibodies
Applications:	IF, IHC, WB
Recommended Dilution:	Western blot: 1/500-1/1000. Immunohistochemistry on paraffin sections 1/50-1/200. Immunofluorescence: 1/50-1/200.
Reactivity:	Human, Mouse
Host:	Rabbit
Clonality:	Polyclonal
Immunogen:	Synthetic peptide, corresponding to amino acids 287-325 of Human MSY2.
Specificity:	This antibody detects endogenous levels of MSY2 protein. (region surrounding Gly311)
Formulation:	Phosphate buffered saline (PBS), pH~7.2 State: Aff - Purified State: Liquid purified Ig fraction (> 95% pure by SDS-PAGE). Preservative: 0.05% Sodium Azide
Concentration:	1.0 mg/ml
Purification:	Affinity Chromatography using epitope-specific immunogen.
Conjugation:	Unconjugated
Storage:	Store undiluted at 2-8°C for one month or (in aliquots) at -20°C for longer. Avoid repeated freezing and thawing.
Stability:	Shelf life: one year from despatch.
Predicted Protein Size:	~ 38 kDa
Gene Name:	Y-box binding protein 2
Database Link:	Entrez Gene 51087 Human Q9Y2T7



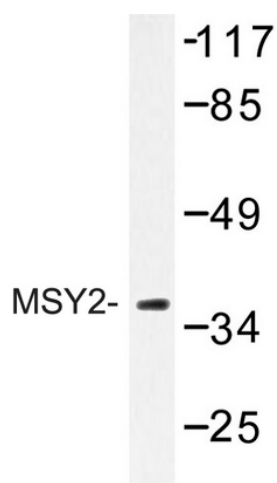
[View online »](#)

Background:

Contrin (MSY2 in mouse) and YB-2 (MSY3/4 in mouse) belong to the Y-box family of multifunctional proteins that regulate both transcription and translation. Y-box proteins interact with a wide variety of nucleic acid structures to act as transcription factors and mRNA masking proteins. The modular structure of Y-box proteins includes a highly conserved N-terminal cold-shock domain (CSD, equivalent to the bacterial cold-shock proteins) and four basic C-terminal domains containing arginine clusters and aromatic residues. MSY2 (Contrin) is expressed in testis and ovary, where it may repress translation of parental mRNA. The gene encoding human Contrin maps to chromosome 17p11.2-13.1. MSY3/4 (YB-2) is also known as DNA binding protein A and is highly expressed in testis, heart and muscle. Contrin and YB-2 bind to the consensus sequence 5'-UCCAUCA-3' contained in the Y-box element.

Synonyms:

Contrin, DBPC, CSDA3, MSY2

Product images:


Western blot (WB) analysis of MSY2 antibody in extracts from COLO205 cells.