

## Product datasheet for **AP06762PU-N**

### ELF5 Rabbit Polyclonal Antibody

#### Product data:

Product Type:	Primary Antibodies
Applications:	IF, WB
Recommended Dilution:	<b>Western blot:</b> 1/500-1/1000. <b>Immunofluorescence:</b> 1/50-1/200.
Reactivity:	Human, Mouse
Host:	Rabbit
Clonality:	Polyclonal
Immunogen:	Synthetic peptide, corresponding to amino acids 182-230 of Human Elf-5.
Specificity:	This antibody detects endogenous levels of Elf-5 protein. (region surrounding Trp215)
Formulation:	Phosphate buffered saline (PBS), pH~7.2 State: Aff - Purified State: Liquid purified Ig fraction (> 95% pure by SDS-PAGE). Preservative: 0.05% Sodium Azide
Concentration:	1.0 mg/ml
Purification:	Affinity Chromatography using epitope-specific immunogen.
Conjugation:	Unconjugated
Storage:	Store undiluted at 2-8°C for one month or (in aliquots) at -20°C for longer. Avoid repeated freezing and thawing.
Stability:	Shelf life: one year from despatch.
Predicted Protein Size:	~ 31 kDa
Gene Name:	E74 like ETS transcription factor 5
Database Link:	<a href="#">Entrez Gene 13711 Mouse</a> <a href="#">Entrez Gene 2001 Human</a> <a href="#">Q9UKW6</a>



[View online »](#)

**Background:**

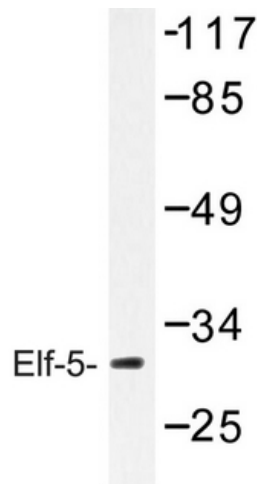
Ets-1 is the prototype member of a family of genes identified on the basis of homology to the v-Ets oncogene isolated from the E26 erythroblastosis virus. This family of genes currently includes Ets-1, Ets-2, Erg-1-3, Elk-1, Elf-1, Elf-5, NERF, PU.1, PEA3, ERM, FEV, ER8I, Fli-1, TEL, Spi-B, ESE-1, ESE-3A, Net, ABT1 and ERF. Members of the Ets gene family exhibit varied patterns of tissue expression, and share a highly conserved carboxy terminal domain containing a sequence related to the SV40 large T antigen nuclear localization signal sequence. This conserved domain is essential for Ets-1 binding to DNA and is likely to be responsible for the DNA-binding activity of all members of the Ets gene family. Elf-5 is a member of the Ets family that may be involved in lung, mammary, prostate and kidney function, and may also play a role in tumorigenesis.

**Synonyms:**

E74-like factor 5, Elf-5

**Protein Families:**

Transcription Factors

**Product images:**

Western blot (WB) analysis of Elf-5 antibody in extracts from Jurkat cells.