

## Product datasheet for **AP06753PU-M**

### **MNK1 (MKNK1) Rabbit Polyclonal Antibody**

#### **Product data:**

Product Type:	Primary Antibodies
Applications:	IHC, WB
Recommended Dilution:	<b>Western blot:</b> 1/500-1/1000. <b>Immunohistochemistry on paraffin sections:</b> 1/50-1/200.
Reactivity:	Human, Mouse
Host:	Rabbit
Clonality:	Polyclonal
Immunogen:	Synthetic peptide, corresponding to amino acids 102-154 of Human Mnk1.
Specificity:	This antibody detects endogenous levels of Mnk1 protein. (region surrounding Ile136)
Formulation:	Phosphate buffered saline (PBS), pH 7.2. State: Aff - Purified State: Liquid purified Ig fraction Preservative: 0.05% sodium azide
Concentration:	1.0 mg/ml
Purification:	Affinity-chromatography using epitope-specific immunogen and the purity is > 95% (by SDS-PAGE)
Conjugation:	Unconjugated
Storage:	Store undiluted at 2-8°C for one month or (in aliquots) at -20°C for longer. Avoid repeated freezing and thawing.
Stability:	Shelf life: one year from despatch.
Predicted Protein Size:	~ 51 kDa
Gene Name:	MAP kinase interacting serine/threonine kinase 1
Database Link:	<a href="#">Entrez Gene 8569 Human</a> <a href="#">Q9BUB5</a>



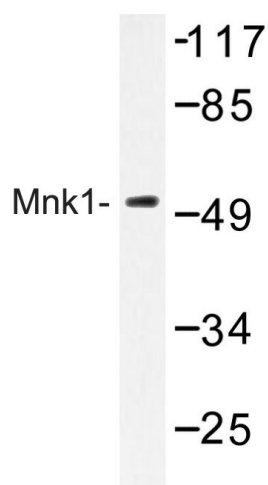
[View online »](#)

**Background:**

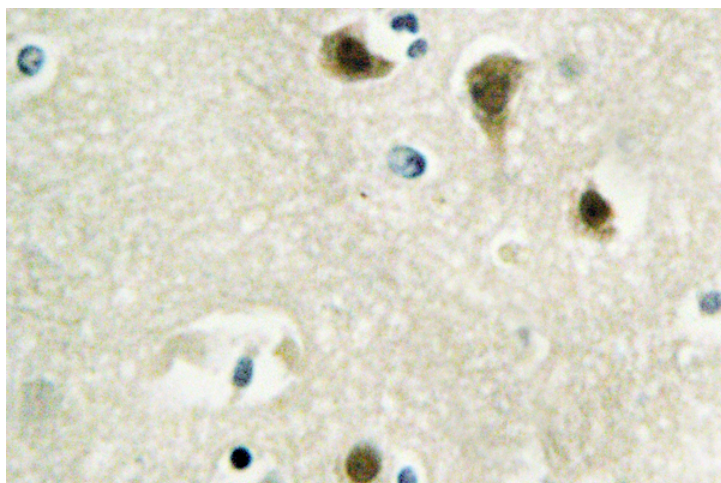
The MAPKAP kinases (for MAP kinase activated protein kinases) are a group of MAP kinase substrates which are themselves kinases. In response to activation, the MAP kinases phosphorylate downstream components on a consensus Pro-X-Ser/Thr-Pro motif. Several kinases that contain this motif have been identified and serve as substrates for the ERK and p38 MAP kinases. These include the serine/threonine kinases Rsk-1 (also designated MAPKAP kinase-1), Rsk-2 and Rsk-3, which are phosphorylated by ERK1 and ERK2. Similarly p38 phosphorylates and activates the serine/threonine kinases MAPKAP kinase-2 and MAPKAP kinase-3 (also designated 3pK). The serine/threonine kinases Mnk1 and Mnk2 are substrates for both ERK and p38 MAP kinases.

**Synonyms:**

MNK1, MAP kinase-interacting serine/threonine-protein kinase 1

**Product images:**


Western blot (WB) analysis of Mnk1 antibody in extracts from HUVEC cells.



Immunohistochemistry (IHC) analyzes of Mnk1 antibody on paraffin-embedded sections.