

Product datasheet for **AP06751PU-M**

ATF6 beta (ATF6B) Rabbit Polyclonal Antibody

Product data:

Product Type:	Primary Antibodies
Applications:	WB
Recommended Dilution:	Western blot: 1/500-1/1000.
Reactivity:	Human
Host:	Rabbit
Clonality:	Polyclonal
Immunogen:	Synthetic peptide, corresponding to amino acids 390-442 of Human ATF6B.
Specificity:	This antibody detects endogenous levels of ATF-6 β protein. (region surrounding Ser425)
Formulation:	Phosphate buffered saline (PBS), pH 7.2. State: Aff - Purified State: Liquid purified Ig fraction Preservative: 0.05% sodium azide
Concentration:	1.0 mg/ml
Purification:	Affinity-chromatography using epitope-specific immunogen and the purity is > 95% (by SDS-PAGE)
Conjugation:	Unconjugated
Storage:	Store undiluted at 2-8°C for one month or (in aliquots) at -20°C for longer. Avoid repeated freezing and thawing.
Stability:	Shelf life: one year from despatch.
Predicted Protein Size:	~ 76 kDa
Gene Name:	activating transcription factor 6 beta
Database Link:	Entrez Gene 1388 Human Q99941



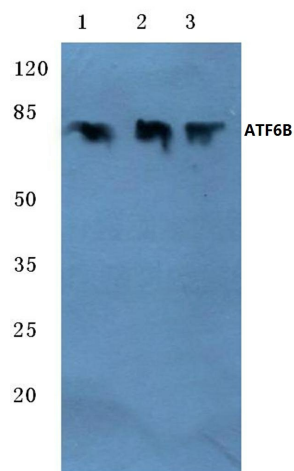
[View online »](#)

Background:

ATF-6 is a member of the basic-leucine zipper family of transcription factors. Endoplasmic reticulum stress causes cleavage of transmembrane ATF-6 and translocation of active ATF-6 to the nucleus. Soluble ATF-6 can exist as either an ATF-6 β homodimer or an ATF-6 α/β heterodimer. Binding of the ATF-6 β homodimer or ATF-6 α/β heterodimer to the nuclear transcription factor Y C (NF-YC) induces ER chaperone transcription. Human ATF-6 β maps to 1q22-q23 gene locus.

Synonyms:

ATF-6, CREBL1, G13, Creb-rp, Activating transcription factor 6 beta

Product images:


Western blot (WB) analysis of ATF6B antibody at 1/500 dilution Lane 1:MCF-7 whole cell lysate
Lane 2:Mouse liver tissue lysate Lane 3:Rat liver tissue lysate