

Product datasheet for **AP06749PU-S**

MAP4K1 Rabbit Polyclonal Antibody

Product data:

Product Type:	Primary Antibodies
Applications:	WB
Recommended Dilution:	Western blot: 1/500-1/1000.
Reactivity:	Human, Mouse
Host:	Rabbit
Clonality:	Polyclonal
Immunogen:	Synthetic peptide, corresponding to amino acids 365-412 of Human HPK1.
Specificity:	This antibody detects endogenous levels of HPK1 protein. (region surrounding Leu397)
Formulation:	Phosphate buffered saline (PBS), pH~7.2 State: Aff - Purified State: Liquid purified Ig fraction (> 95% pure by SDS-PAGE). Preservative: 0.05% Sodium Azide
Concentration:	1.0 mg/ml
Purification:	Affinity Chromatography using epitope-specific immunogen.
Conjugation:	Unconjugated
Storage:	Store undiluted at 2-8°C for one month or (in aliquots) at -20°C for longer. Avoid repeated freezing and thawing.
Stability:	Shelf life: one year from despatch.
Predicted Protein Size:	~91 kDa
Gene Name:	mitogen-activated protein kinase kinase kinase kinase 1
Database Link:	Entrez Gene 11184 Human Q92918



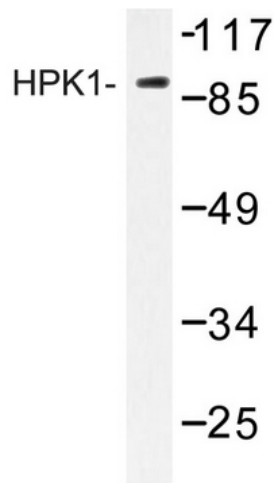
[View online »](#)

Background:

Several mammalian kinases have been identified with sequence similarity to the *Saccharomyces cerevisiae* serine/threonine kinase STE20. STE20 is involved in relaying signals from G protein coupled receptors to cytosolic MAP kinase cascades, and it lies upstream of a MAP kinase kinase kinase. Mammalian STE20-like kinases include HPK1, KHS, GLK, NIK, YSK1, Krs-1, Krs-2 and GC kinase. HPK1 (hematopoietic progenitor kinase 1), like many other STE20-like kinases, specifically activates the JNK signaling pathway. HPK1 binds to and phosphorylates MEKK, suggesting it plays an important role in regulating the stress responsive JNK/SAPK signaling pathway.

Synonyms:

MEKKK 1, MAPK/ERK kinase kinase kinase 1, HPK1

Product images:

Western blot (WB) analysis of HPK1 antibody in extracts from HepG2 cells.