

Product datasheet for **AP06747PU-N**

CDKL2 Rabbit Polyclonal Antibody

Product data:

Product Type:	Primary Antibodies
Applications:	IHC, WB
Recommended Dilution:	Western blot: 1/500-1/1000. Immunohistochemistry on Paraffin Sections: 1/50-1/200.
Reactivity:	Human
Host:	Rabbit
Clonality:	Polyclonal
Immunogen:	Synthetic peptide, corresponding to amino acids 210-260 of Human KKIAMRE.
Specificity:	This antibody detects endogenous levels of KKIAMRE protein. (region surrounding Leu240)
Formulation:	Phosphate buffered saline (PBS), pH 7.2 State: Aff - Purified State: Liquid purified Ig fraction (> 95% pure by SDS-PAGE) Preservative: 0.05% sodium azide
Concentration:	1.0 mg/ml
Purification:	Affinity Chromatography using epitope-specific immunogen.
Conjugation:	Unconjugated
Storage:	Store undiluted at 2-8°C for one month or (in aliquots) at -20°C for longer. Avoid repeated freezing and thawing.
Stability:	Shelf life: one year from despatch.
Predicted Protein Size:	~ 56 kDa
Gene Name:	cyclin dependent kinase like 2
Database Link:	Entrez Gene 8999 Human Q92772



[View online »](#)

Background:

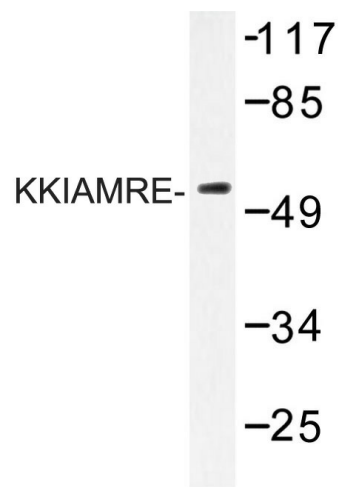
The activation of signal transduction pathways by growth factors, hormones and neurotransmitters is mediated by the MAP kinases ERK 1 and ERK 2. ERK proteins are regulated by dual phosphorylation at specific tyrosine and threonine sites mapping within a characteristic Thr-Glu-Tyr motif. The protein kinase p56 KKIAMRE is distantly related to the MAP kinase group of proteins and is closely related to p42 KKIALRE. KKIAMRE is predominantly expressed in testis, kidney, brain and lung. KKIAMRE contains the conserved MAP kinase dual phosphorylation motif in the sequence Thr-Asp-Tyr and is activated by treatment of cells by EGF. However, unlike other MAP kinases, the EGF-stimulated kinase activity does not require phosphorylation of KKIAMRE and KKIALRE in the Thr-Asp-Tyr motif.

Synonyms:

KKIAMRE

Protein Families:

Druggable Genome, Protein Kinase

Product images:

Western blot (WB) analysis of KKIAMRE antibody in extracts from Jurkat cells.