

## Product datasheet for **AP06744PU-N**

### SMRC2 (SMARCC2) Rabbit Polyclonal Antibody

#### Product data:

Product Type:	Primary Antibodies
Applications:	IF, WB
Recommended Dilution:	<b>Western blot:</b> 1/500-1/1000. <b>Immunofluorescence:</b> 1/50-1/200.
Reactivity:	Human, Mouse
Host:	Rabbit
Clonality:	Polyclonal
Immunogen:	Synthetic peptide, corresponding to amino acids 350-402 of Human BAF170.
Specificity:	This antibody detects endogenous levels of BAF170 protein. (region surrounding Met388)
Formulation:	Phosphate buffered saline (PBS), pH 7.2. State: Aff - Purified State: Liquid purified Ig fraction Preservative: 0.05% sodium azide
Concentration:	1.0 mg/ml
Purification:	Affinity-chromatography using epitope-specific immunogen and the purity is > 95% (by SDS-PAGE)
Conjugation:	Unconjugated
Storage:	Store undiluted at 2-8°C for one month or (in aliquots) at -20°C for longer. Avoid repeated freezing and thawing.
Stability:	Shelf life: one year from despatch.
Predicted Protein Size:	~ 170 kDa
Gene Name:	SWI/SNF related, matrix associated, actin dependent regulator of chromatin subfamily c member 2
Database Link:	<a href="#">Entrez Gene 6601 Human Q8TAQ2</a>



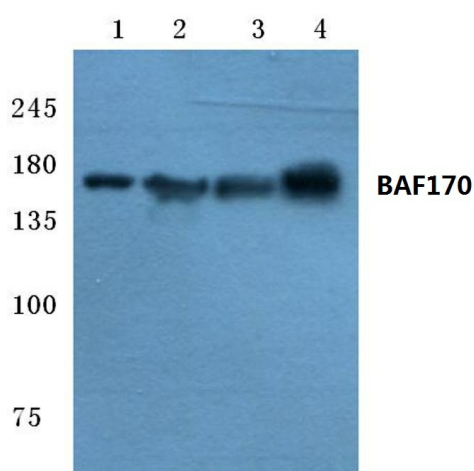
[View online »](#)

**Background:**

The SWI/SNF complex is involved in the activation of transcription via the remodeling of nucleosome structure in an ATP-dependent manner. Brm (also designated SNF1 or SNF2 $\alpha$ ) and Brg-1 (also designated SNF2 or SNF2 $\beta$ ) are the ATPase subunits of the mammalian SWI/SNF complex. Brm, Brg-1, Ini1 (integrase interactor 1, also designated SNF5), BAF155 (also designated SRG3) and BAF170 are thought to comprise the functional core of the SWI/SNF complex. Addition of Ini1, BAF155 and BAF170 to Brg-1 appears to increase remodeling activity. Other complex subunits are thought to play regulatory roles. hSNF2L and hSNF2H both appear to be homologs of *Drosophila* ISWI, a Brm related ATPase that is present in chromatin remodeling complexes other than SWI/SNF, including the NURF (nucleosome remodeling factor).

**Synonyms:**

BAF170; CRACC2; Rsc8

**Product images:**

Western blot (WB) analysis of BAF170 antibody at 1/500 dilution Lane 1:HEK293T whole cell lysate Lane 2:Mouse liver tissue lysate Lane 3:Rat liver tissue lysate Lane 4:MCF-7 whole cell lysate