

## Product datasheet for **AP06738PU-N**

### CEBPE Rabbit Polyclonal Antibody

#### Product data:

|                         |   |
|-------------------------|---|
| Product Type:           | Primary Antibodies  |
| Applications:           | IHC, WB   |
| Recommended Dilution:   | <b>Western blot:</b> 1/500-1/1000.<br><b>Immunohistochemistry on paraffin sections</b> 1/50-1/200.  |
| Reactivity:             | Human, Mouse, Rat   |
| Host:                   | Rabbit  |
| Clonality:              | Polyclonal  |
| Immunogen:              | Synthetic peptide, corresponding to amino acids 188-245 of Human C/EBP-ε.   |
| Specificity:            | This antibody detects endogenous levels of C/EBP-epsilon protein.<br>(region surrounding Lys220)  |
| Formulation:            | Phosphate buffered saline (PBS), pH 7.2.<br>State: Aff - Purified<br>State: Liquid purified Ig fraction (> 95% pure by SDS-PAGE).<br>Preservative: 0.05% Sodium Azide |
| Concentration:          | 1.0 mg/ml   |
| Purification:           | Affinity Chromatography using epitope-specific immunogen.   |
| Conjugation:            | Unconjugated  |
| Storage:                | Store undiluted at 2-8°C for one month or (in aliquots) at -20°C for longer.<br>Avoid repeated freezing and thawing.  |
| Stability:              | Shelf life: one year from despatch.   |
| Predicted Protein Size: | ~ 30 kDa  |
| Gene Name:              | CCAAT/enhancer binding protein epsilon  |
| Database Link:          | <a href="#">Entrez Gene 1053 Human</a><br><a href="#">Q15744</a>  |



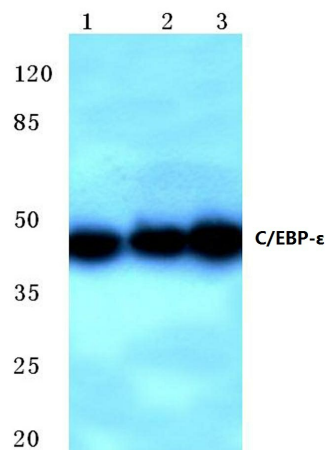
[View online »](#)

**Background:**

The transcription factor C/EBP alpha (CCAAT-enhancer binding protein) is a heatstable, sequence-specific DNA-binding protein first purified from rat liver nuclei that binds avidly to several different cis-regulatory DNA sequences commonly associated with viral and cellular genes transcribed by RNA polymerase II. C/EBP alpha regulates gene expression in a variety of tissues including liver, adipose, lung and intestine. C/EBP alpha uses a bipartite structural motif to bind DNA. Two protein chains dimerize through a set of amphipathic alpha helices termed the leucine zipper. Highly basic polypeptide regions emerge from the zipper to form a linked set of DNA contact surfaces. C/EBP alpha appears to function exclusively in terminally differentiated, growth-arrested cells. Additional family members include C/EBP beta, C/EBP gamma, C/EBP delta and C/EBP epsilon, all of which exhibit similar DNA-binding specificities and affinities to C/EBP alpha. Furthermore, C/EBP beta and C/EBP delta readily form heterodimers both with each other as well as with C/EBP alpha.

**Synonyms:**

C/EBP epsilon

**Product images:**

Western blot (WB) analysis of C/EBP-ε antibody at 1/500 dilution. Lane 1: Hela whole cell lysate, Lane 2: Raw264.7 whole cell lysate, Lane 3: Rat kidney tissue lysate.