

## Product datasheet for **AP06737PU-S**

### MED1 Rabbit Polyclonal Antibody

#### Product data:

Product Type:	Primary Antibodies
Applications:	IHC, WB
Recommended Dilution:	<b>Western blot:</b> 1/500-1/1000. <b>Immunohistochemistry on paraffin sections</b> 1/50-1/200.
Reactivity:	Human, Mouse
Host:	Rabbit
Clonality:	Polyclonal
Immunogen:	Synthetic peptide, corresponding to amino acids 664-720 of Human TRAP220.
Specificity:	This antibody detects endogenous levels of TRAP220 protein. (region surrounding Pro697)
Formulation:	Phosphate buffered saline (PBS), pH~7.2 State: Aff - Purified State: Liquid purified Ig fraction (> 95% pure by SDS-PAGE). Preservative: 0.05% Sodium Azide
Concentration:	1.0 mg/ml
Purification:	Affinity Chromatography using epitope-specific immunogen.
Conjugation:	Unconjugated
Storage:	Store undiluted at 2-8°C for one month or (in aliquots) at -20°C for longer. Avoid repeated freezing and thawing.
Stability:	Shelf life: One year from despatch.
Predicted Protein Size:	~170 kDa
Gene Name:	mediator complex subunit 1
Database Link:	<a href="#">Entrez Gene 5469 Human Q15648</a>



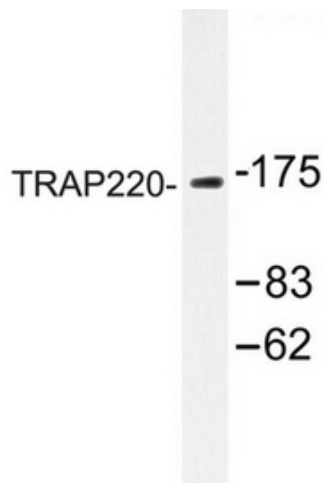
[View online »](#)

**Background:**

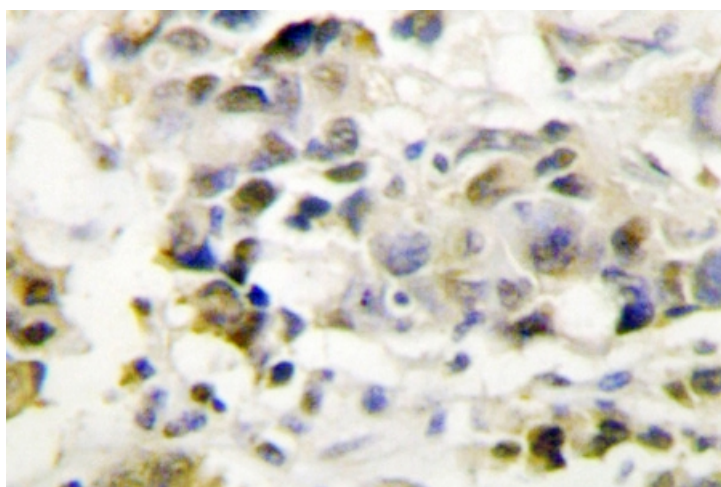
In mammalian cells, transcription is regulated in part by high molecular weight coactivating complexes that mediate signaling between transcriptional activators and initiation factors. These complexes include the thyroid hormone receptor-associated protein (TRAP) complex, which interacts with thyroid receptors (TR), vitamin D receptors and other steroid receptors to facilitate hormone induced transcriptional activation. The TRAP complex consists of numerous proteins ranging in size from 20 to 240 kDa, including TRAP95, TRAP100, TRAP150, TRAP220 and TRAP230, that are characterized by the presence of a nuclear receptor recognition motif which mediates the liganddependent binding of TRAP proteins to the nuclear receptors. TRAP220 and TRAP100 are widely expressed and most abundantly detected in skeletal muscle, heart and placenta. TRAP95, TRAP150 and TRAP230 facilitate TR induced transcription by associating with an additional transcriptional coactivating complex SMCC (SRB and MED protein cofactor complex), which consists of various subunits that share homology with several components of the yeast transcriptional mediator complexes.

**Synonyms:**

ARC205, CRSP1, CRSP200, DRIP205, DRIP230, PBP, PPARBP, PPARGBP, RB18A, TRAP220, TRIP2, Mediator complex subunit 1

**Product images:**

Western blot analysis of TRAP220 antibody in extracts from Jurkat cells.



Immunohistochemistry analysis of TRAP220 antibody in paraffin-embedded human breast carcinoma tissue.